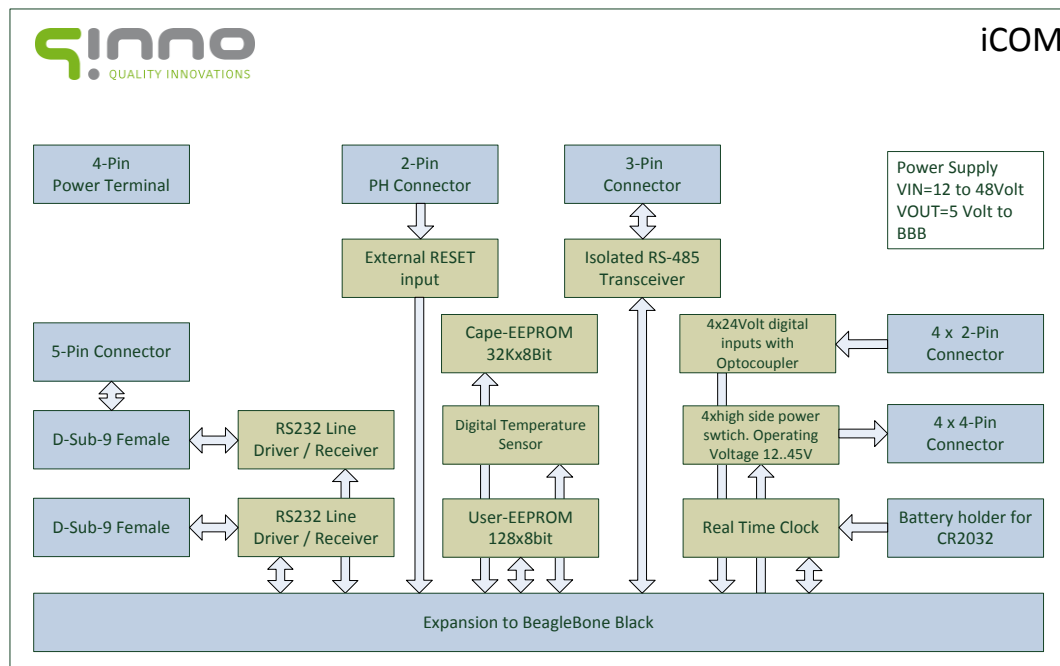


CAPE Extension Modules

The qinno iCOM extension module is a CAPE specifically designed for the Beagle Bone Black (BBB). The iCOM provides different Interfaces and D I/O for direct usages in industrial environment.

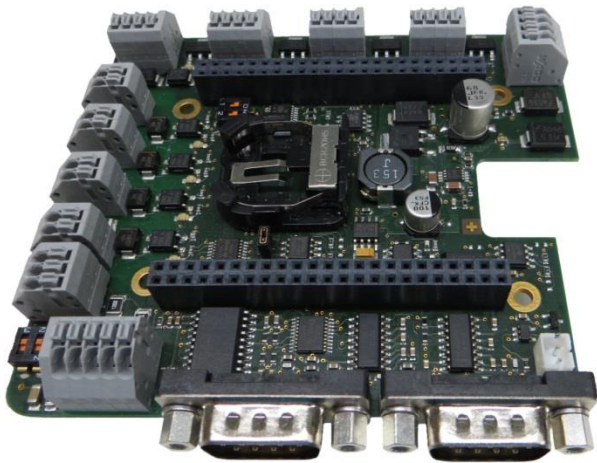


Block diagram

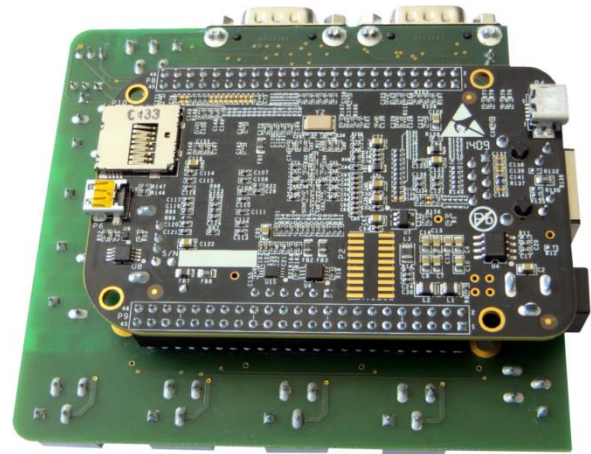
Specifications

| General | | Power Supply | |
|----------------------------|---|-----------------------------|--|
| Bus Interface | BeagleBone Black (BBB) Rev B | Input Voltage Range | 12V to 48V DC |
| Ports | 2x RS232; 1xRS485 | Maximum Current | 2A for BBB and onboard CAPE Devices |
| Digital Output | 4 | Additional Functions | |
| Digital Inputs | 4 | Sensors | Onboard Temperature Sensor |
| Certification | CE Conform | Memory | Onboard CAPE EEPROM (256 kBit) |
| Communication | | Memory | Onboard User EEPROM (1024 kBit) |
| Data Signals RS232 | TxD,RxD,CTS,RTS | RTC | RealTimeClock with CR2032 Batterie Holder |
| RS485 | Termination switchable, Signal and Power Isolated | Status LED's | Digital In/Out |
| Digital I/O | | Environment | |
| Input Voltage Range | Up to 24V DC | Dimensions | 100,2 x 89,1 mm |
| Output Voltage Range | 12V up to 45V DC | Operating Temperature | -20 up to 70 °C (except Battery) |
| Output on-state resistance | 200mΩ | Ambient operating humidity | 35% to 90% (at 5 to 35°C) |
| Output load current | Self limited; Nominal 0,7 A; LED for each digital I/O's | Software | |
| | | Ångström Linux | BSP available / Driver Support |

Pictures



TOP Side



Bottom Side incl. BBB