



CE Workgroup

Status of Embedded Linux

June 2012

Tim Bird

Architecture Group Chair

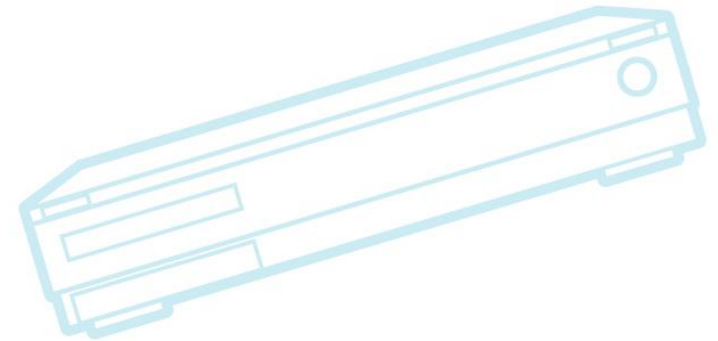
LF CE Workgroup



CE Workgroup

Outline

Kernel Versions
Technology Areas
CE Workgroup Projects
Other Stuff
Resources





CE Workgroup

Outline

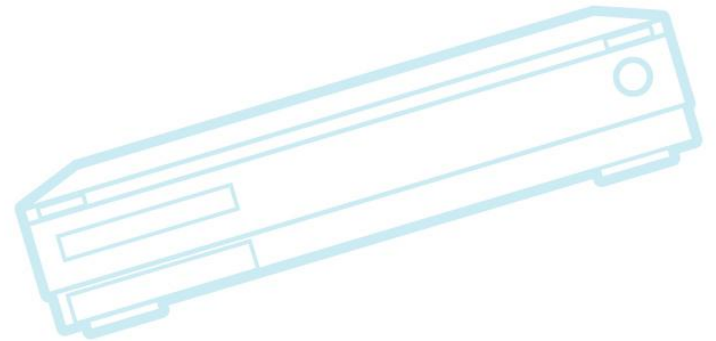
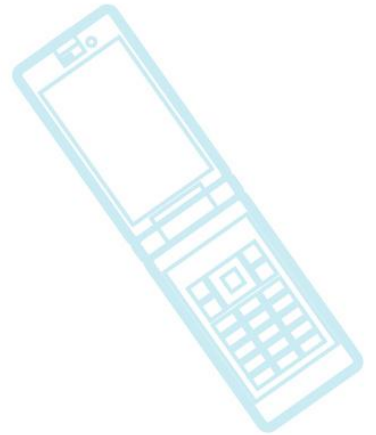
Kernel Versions

Technology Areas

CE Workgroup Projects

Other Stuff

Resources





CE Workgroup

Kernel Versions

- Linux v2.6.39 – 19 May 2011 – 66 days
- Linux v3.0 – 21 July 2011 – 63 days
- Linux v3.1 – 24 Oct 2011 – 95 days
 - Larger due to kernel.org breakin
- Linux v3.2 – 4 Jan 2012 – 72 days
- Linux v3.3 – 18 Mar 2012 – 74 days
- Linux v3.4 – 20 May 2012 – 63 days
- Linux v3.5-rc2 – 9 June 2012 ...
 - (Maybe 3.5 at start of August)



CE Workgroup

Linux v2.6.39

- Pstore
 - Store information from dying kernel into some persistent storage
 - Similar to mtdoops or ramoops
 - See <http://lwn.net/Articles/434821/>
- Device power domains for runtime PM
- ARM arch tree changes (just starting)



CE Workgroup

Linux v3.0

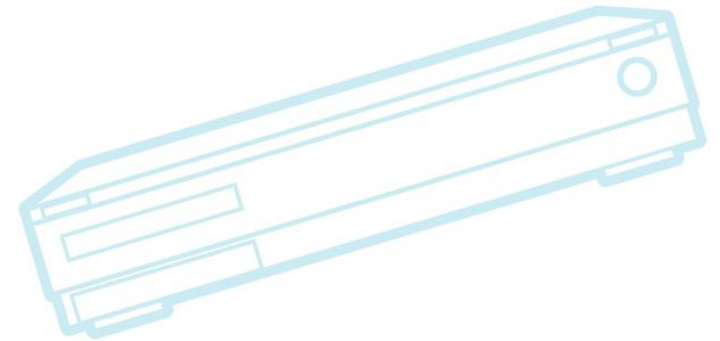
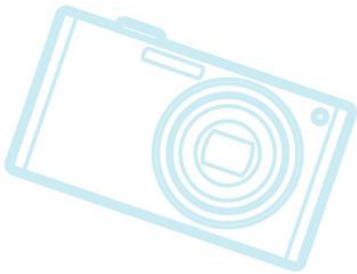
- Fast symbol resolution for module loading
 - Binary search instead of linear lookup for module linking
- POSIX alarm timers
 - Similar to Android Alarm Timers
 - See <http://lwn.net/Articles/429935/>
- BKL function calls are now gone
- More ARM arch tree changes



CE Workgroup

Linux v3.1

- Watchdog timer core
- New framework for handling power management domains was added
 - See `driver/base/power/domain.c`
- Multiple ARM SoCs now have device tree support





CE Workgroup

Linux v3.2

- New pin control subsystem
 - Allows control of multiple pins as named groups, with multiplexing
 - See Documentation/pinctrl.txt
 - See ELC 2012 talk by Linus Walleij
- devfreq – DVFS for non-cpu devices
- PM QOS now supports per-device constraints
 - See Documentation/power/pm_qos_interface.txt
 - See <http://lwn.net/Articles/466230>



CE Workgroup

Linux v3.3

- ARM large physical address extensions
 - See Catalin Marinas talk at ELC Europe 2011
- ALSA support for compressed audio
- New “charger manager” subsystem
 - Can partially resume to poll battery and re-suspend
- Android patches in staging
 - This is really cool
 - Please don't use any interfaces from code in staging!!



CE Workgroup

Linux v3.4

- Universal Flash Storage host controller drivers
 - See [Documentation/scsi/ufs.txt](#)
- Common clock framework
 - Unifies handling of subsystem clocks
 - See [Documentation/clk.txt](#)
- HSI (High-speed synchronous serial interface) framework
 - Used for communication between CPU and cellular modem engines



CE Workgroup

Linux v3.4 (continued)

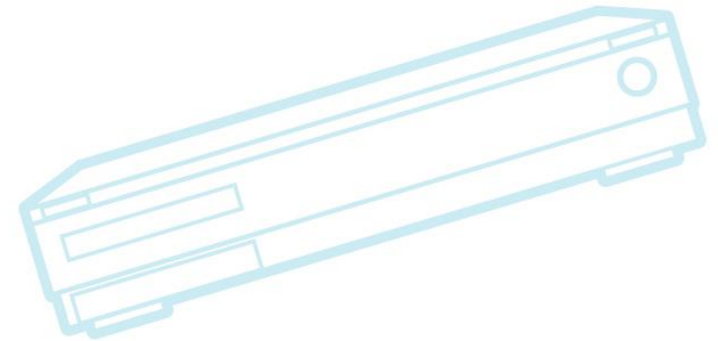
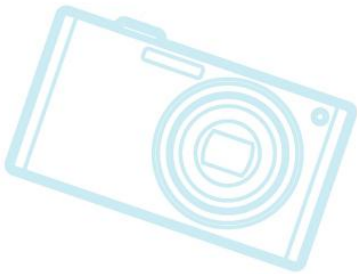
- DMA buffer sharing API
- Remoteproc subsystem
 - Allows for control of other CPUs through shared memory
 - Rpmmsg is a new mechanism for communicating with other CPUs (running non-Linux)
 - See Documentation/remoteproc.txt and rpmmsg.txt



CE Workgroup

Linux v3.5 (probable)

- Kernel log rework
 - Structured printk (new format), with tags
 - <http://lwn.net/Articles/492125/>
- Support for writing NFC drivers
- Integration of ramoops and pstore
 - Part of work to support Android ram_console

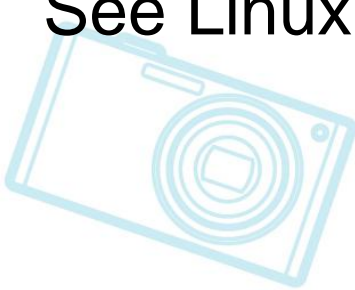
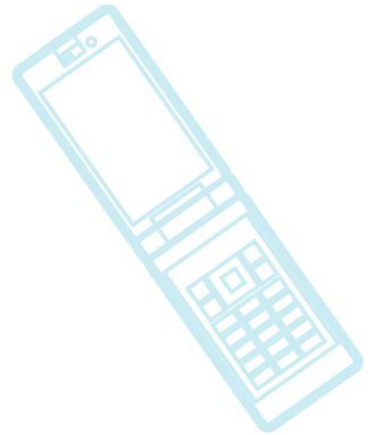




CE Workgroup

Things to watch

- Device trees
- Android features
- Big/Little
- Single kernel image for ARM
 - Result of lots of device tree and ARM refactoring work
 - See LinuxCon Japan talk by Deepak Saxena





CE Workgroup

Outline

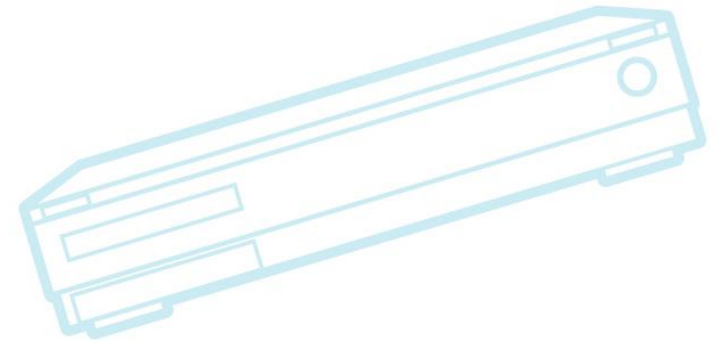
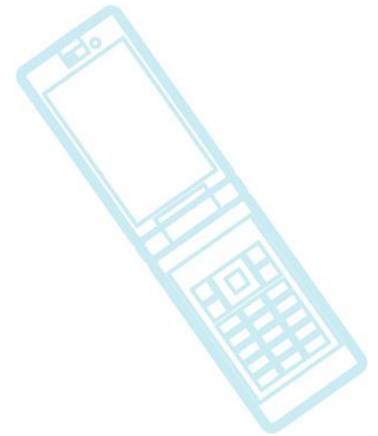
Kernel Versions

Technology Areas

CE Workgroup Projects

Other Stuff

Resources





CE Workgroup

Bootup Time

- Not so much a kernel problem any more
 - Lots of previous talks and presentations
 - Good kernel techniques on eLinux wiki
 - http://elinux.org/Boot_Time
- User-space is big problem area now
 - Kernel should provide features for overall performance
- See presentation by Andrew Murray at ELC Europe 2010
 - Very good philosophy of boot time reduction
 - Bootup time work = re-specialization of software



CE Workgroup

Bootup Time technologies

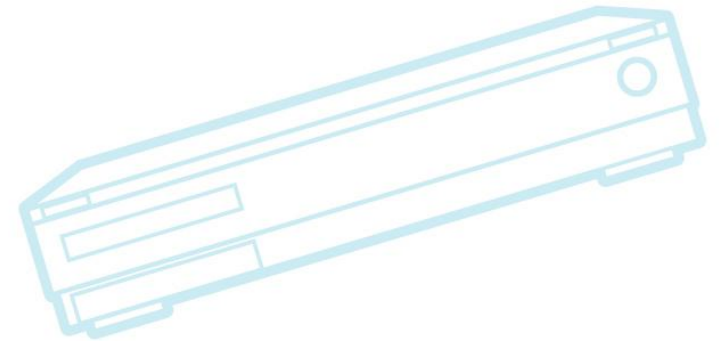
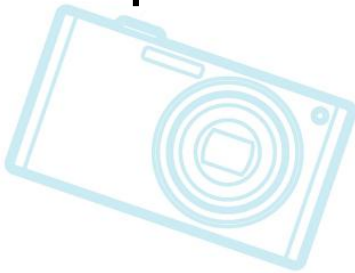
- Bootloader improvements
 - U-Boot ARM caching enhancements
- Snapshot boot
 - Old topic, but still very popular
 - Requires work both inside and outside kernel
 - Not much mainlined
 - See ELC 2011 presentation by Kang Dongwook



CE Workgroup

Graphics

- 3D
 - OpenGL ES is de-facto standard everywhere
- 2D
 - Android had Skia, but is moving to HWUI
 - Other platforms can use Clutter, Qt, and X
 - Framebuffer is going away, with acceleration required for larger screens





CE Workgroup

Graphics (cont.)

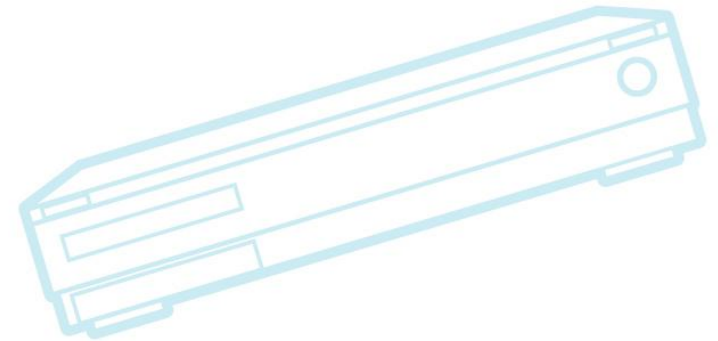
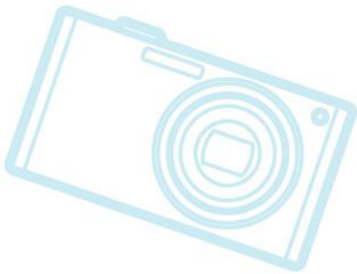
- Lots of work around memory management between kernel, user-space and GPU
- Android has /dev/ion
 - A unified approach to buffer management and sharing between display, GPU, camera, codecs, etc, new in Ice Cream Sandwich
 - Replacement for pmem
- Mainline has Contiguous Memory Allocator (CMA) and dma-buf
 - <http://lwn.net/Articles/468044/> - CMA
 - <http://lwn.net/Articles/470339/> - dma-buf



CE Workgroup

Accelerated rendering

- Accelerated rendering is a big topic
 - Google introduced renderscript
 - Uses LLVM to do runtime retargeting of script to whatever capabilities device has
- Ability to support GPU in SOC is very important

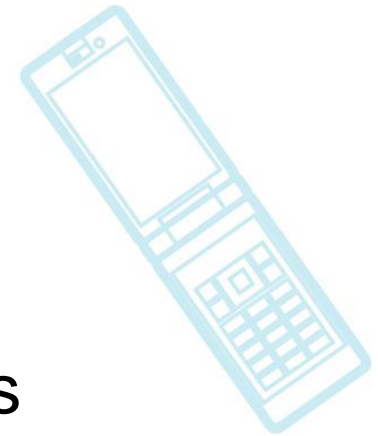
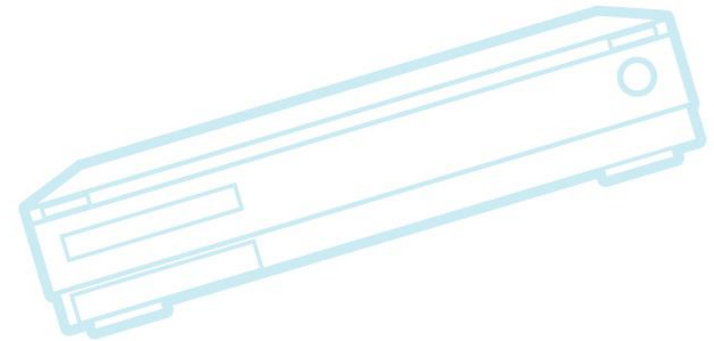




CE Workgroup

Graphics Drivers

- PowerVR graphics driver
 - PowerVR is being used lots of places
 - Intel adopted for Cedarview and it's already in Sodaville
 - Is in very many ARM SOC's
 - PowerVR driver is closed-source
- No clear way to pressure ImageTech or write community driver

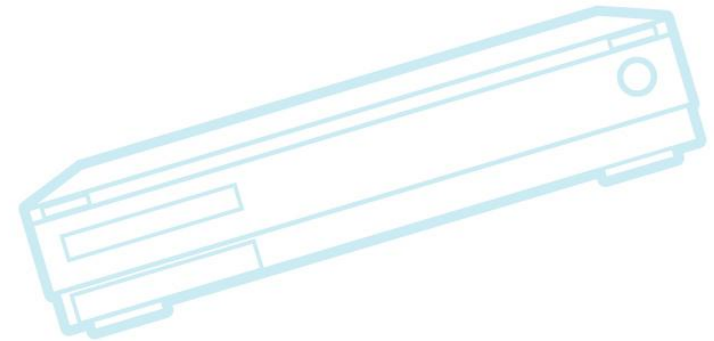
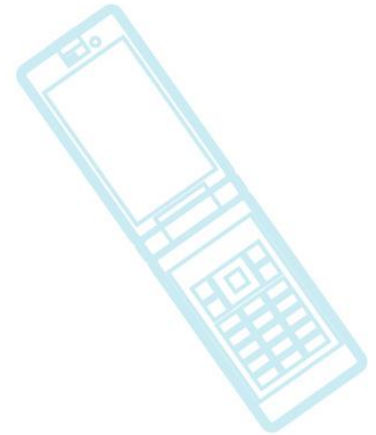




CE Workgroup

Multimedia

- **Gstreamer**
 - Is still being used in TVs
 - Ex: Google TV uses it
- **Android media layer**
 - Stagefright – new media layer
 - Replaces OpenCore?
- **Codec wars**
 - WebM/VP8
 - Free codec by Google
 - Integrated into HTML5





CE Workgroup

File Systems

- **UBIFS**
 - Replacing JFFS2 as default raw flash FS of choice
 - Still needs some boot time improvements
- **YAFFS2 is not in mainline yet**
 - Despite CELF funding
- **LogFS**
 - Appears to be abandoned
- **AXFS**
 - Advanced XIP File system – developed by Intel/Numonyx but never mainlined
 - Sony uses this



CE Workgroup

File Systems (cont.)

- Google using Ext4 on eMMC on current Android devices
 - No more raw NAND flash
- Want to optimize Linux block filesystem layers for flash
 - See Arnd Bergmann's talk at ELC Europe 2011 on filesystem performance on cheap flash media
 - See Ken Tough's ELC 2012 talk



CE Workgroup

Power Management

- Runtime Power Management
 - Relatively new ability to suspend and resume individual system components
 - See <http://lwn.net/Articles/347573/>
- See Magnus Damm's slides at: http://elinux.org/ELC_2011_Presentations
- Device power domains
 - Set of devices sharing power resources (clocks, power planes, etc.)
 - See Rafael Wysocki's talks at LinuxCon Japan 2011 and ELC Europe 2011



CE Workgroup

Power Management

- New attempt at wakelock-compatible solution by Rafael Wysocki
 - “Autosleep and wakelocks”
 - <http://lwn.net/Articles/479841/>
 - Rafael: *“This series tests the theory that the easiest way to sell a once rejected feature is to advertise it under a different name”*
 - Appears to be generating less heated discussion



CE Workgroup

System Size

- Good talks recently:
 - Xi Wang at ELC 2011 about optimizing memory usage throughout the system
 - Darren Hart at ELCE 2011 – poky-tiny
- User space is memory problem area now
 - OOM killer or OOM avoidance is big issue
 - Cgroup memory notifications
 - Android has it's own low memory killer
 - Application lifecycle is key feature



CE Workgroup

Outline

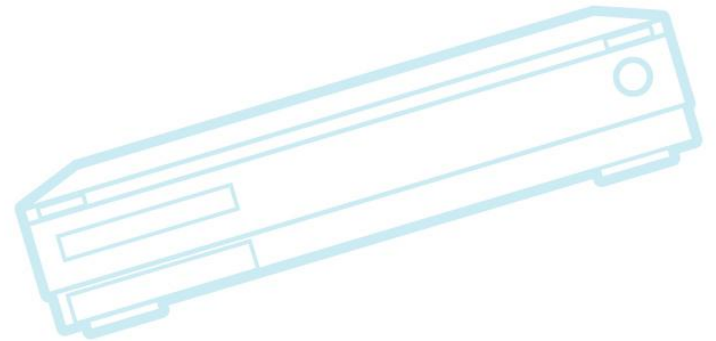
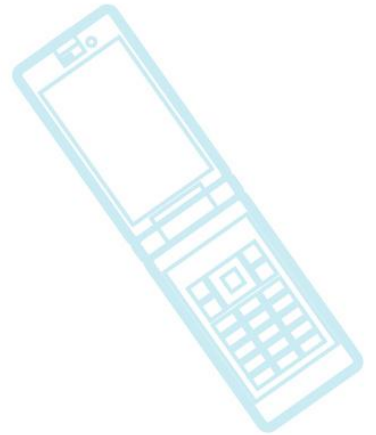
Kernel Versions

Technology Areas

CE Workgroup Projects

Other Stuff

Resources





CE Workgroup

CEWG Contract Work 2011

- Mainline fast symbol resolution
- Mainline Device Firmware Upgrade (DFU) code in U-Boot
- Work on Linux tiny patches
- Improve UBIFS mount time
- Flash filesystem testing
- Mainline the watchdog framework
- Extend bluetooth stack
- Kernel trace and debug documentation



CE Workgroup

Contract Work Details

- Mainline fast symbol resolution
 - Change symbol lookup to use binary search instead of linear scan to speed up module loading
 - Already mainlined (Linux v3.0)
- Mainline DFU code in U-Boot
 - Device Firmware Upgrade (DFU) is an industry standard for upgrading and manipulating firmware in embedded devices
 - Mostly mainlined in u-boot and kernel
- Work on Linux tiny patches
 - Revive Linux-tiny patch set
 - Forward-port patches to latest kernel
 - Add more patches to improve kernel configurability
 - Last work was with function-sections for kernel



CE Workgroup

Contract Work Details (2)

- Improve UBIFS mount time
 - Add logging or checkpointing to UBI to avoid bad-block scan of whole device on UBI attach
 - Series fo “fastmap” patches submitted over last few months
- Flash filesystem testing
 - Publish performance results for each new kernel version
 - Lots of great data – charts and graphs!
 - Check out:
http://elinux.org/Flash_Fileystem_Benchmarks



CE Workgroup

Contract Work Details (3)

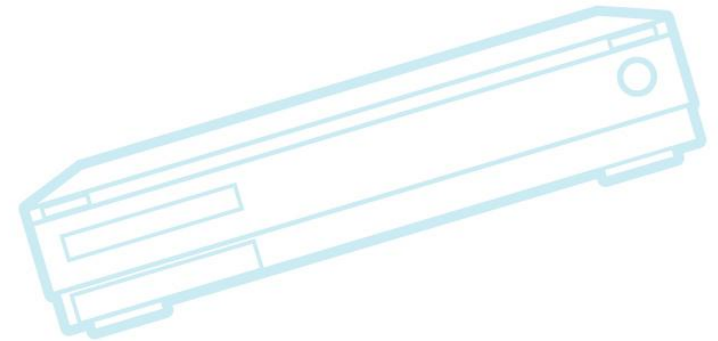
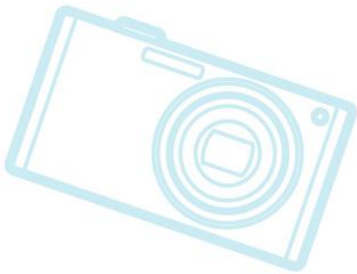
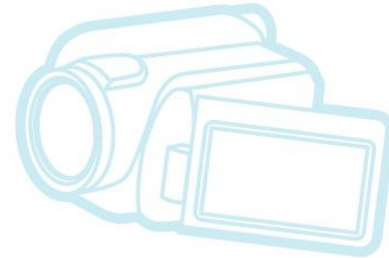
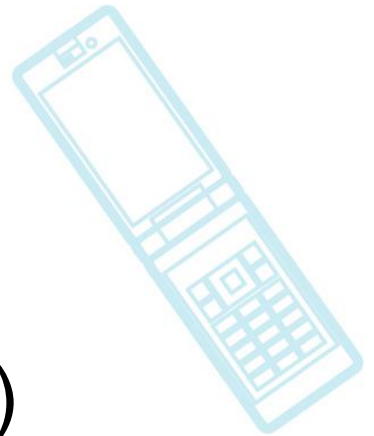
- Mainline the watchdog framework
 - Provides a generalized watchdog mechanism
 - Should provide easier method to add watchdogging to drivers and the kernel going forward
 - Mainlined in 3.1
- Extend bluetooth stack with Remote SIM Access protocol
 - Allows for Linux bluetooth and telephony stack to utilize SIM in external device for operation
 - Primary use is for Linux-based in-car system to utilize SIM in mobile device for telephony
 - Mainlined in upstream bluez and kernel



CE Workgroup

Long-term Projects

- Android mainline project
- Long Term Support Initiative (LTSI)





CE Workgroup

Android Mainline Project

- Mainline Android kernel features
 - Goal is to incrementally reduce diff between Android and mainline kernels
- Interesting discussion at kernel summit
 - Would be nice to support Android with mainline kernel
 - Linus – we've taken sub-optimal stuff before
- Multi-party effort to mainline patches
 - CE WG, Linaro, and others
 - Greg KH put some files into drivers/staging
- Good meeting at Linaro Connect in February



CE Workgroup

Android mainline status

- 3.3 kernel (with 12 lines of patches) boots AOSP
 - Some pieces missing: wakelocks, network security, Android USB gadget
- Work is needed to move items from staging to fully mainlined
- Some work recently on
 - Logger
 - Ram console
 - Led timers



CE Workgroup

Long Term Support Kernel for Industry

- CE Workgroup is initiating a new project for companies to collaborate on maintaining a kernel version for embedded products
 - Similar to long-term kernel maintained in enterprise space
 - Based on community long-term tree
- See presentation by Hisao Munakata at LinuxCon Japan



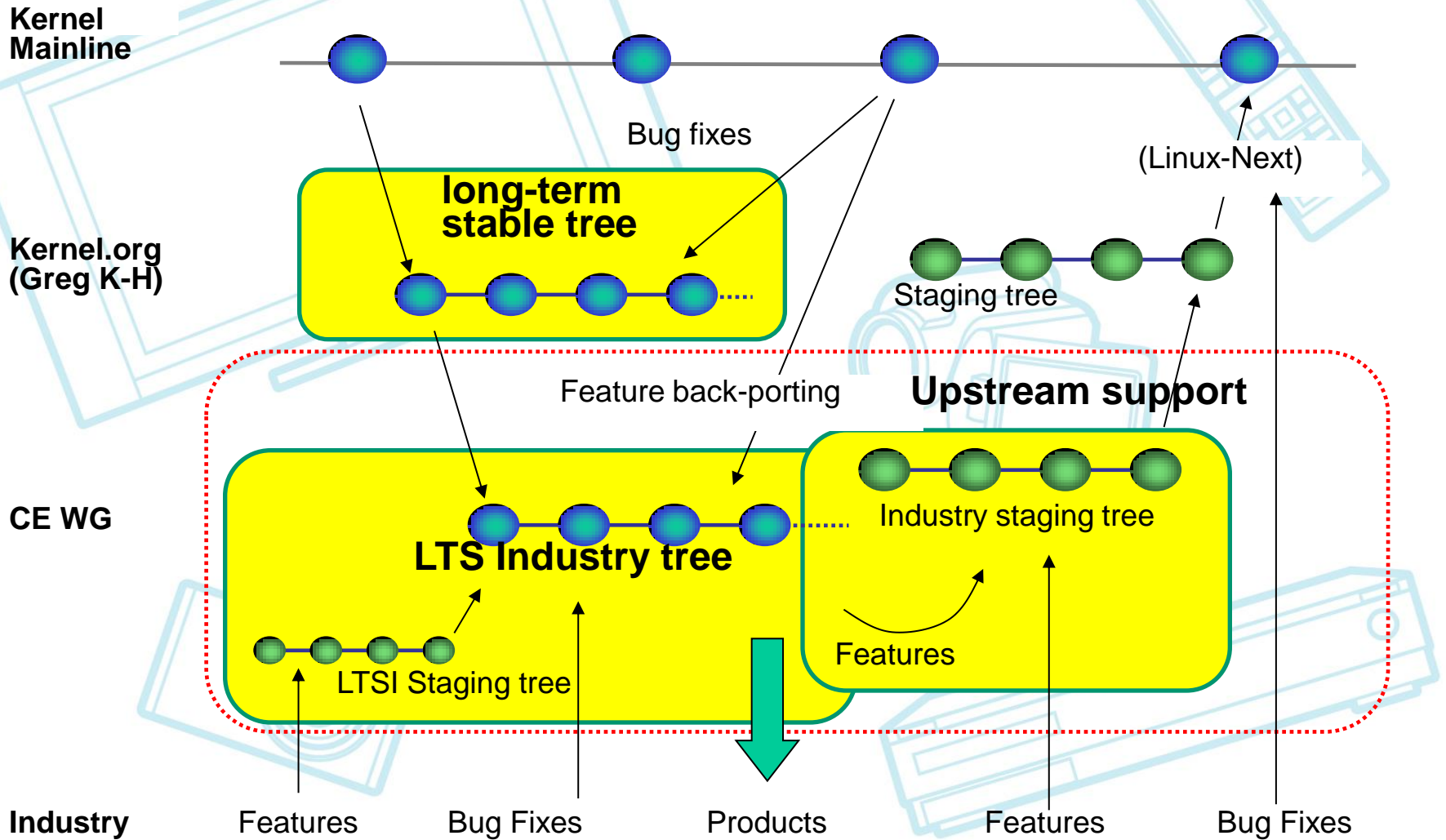
CE Workgroup

LSTI reasons

- Various effects contribute to low contribution rate from consumer electronics product teams
 - Version gap, product schedule impedance mismatch with mainline releases, focus on short-term rather than long-term solutions
- Want to create an area for collaboration between companies, as well as a staging ground for moving code to mainline

LTSI project overview

- Project consists of three parts





CE Workgroup

LSTI details

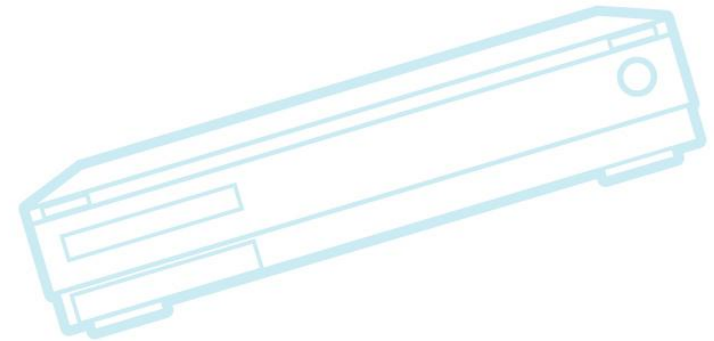
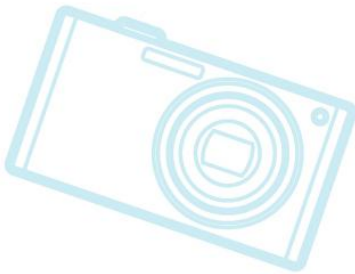
- The plan (subject to change):
 - 2-year overlapping releases
 - Bugfixes from community longterm tree and product trees
 - Backport of some features from mainline
 - Integration of some (a very small set) of out-of-mainline patches (e.g. LTTng, RT-preempt, Linux-tiny)
- Should have first release in June or July 2012



CE Workgroup

Open Project Proposals

- Was announced on celinux-dev mailing list
 - http://elinux.org/CELF_Open_Project_Proposal_2012
- Architecture Group voted on projects in early June
 - Need to get BOD approval, then we'll announce the projects for 2012





CE Workgroup

Outline

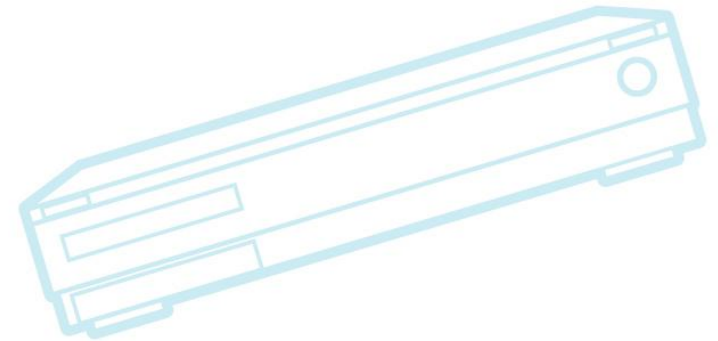
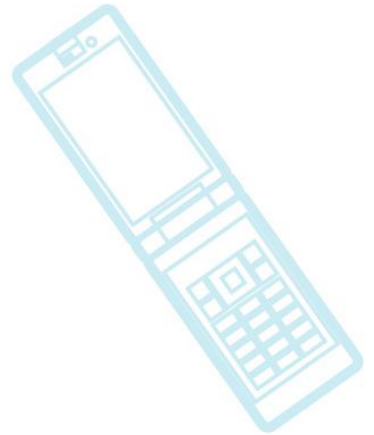
Kernel Versions

Technology Areas

CE Workgroup Projects

Other Stuff

Resources

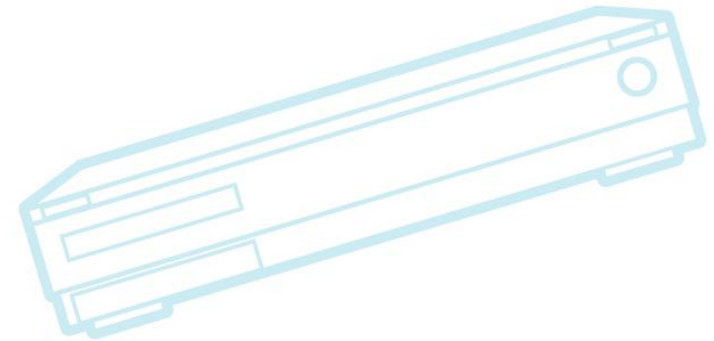
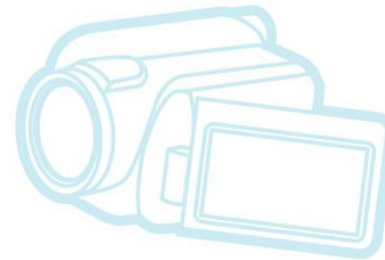
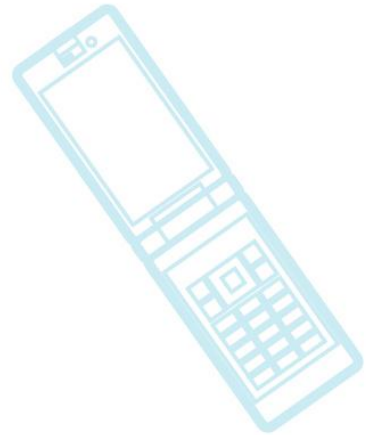




CE Workgroup

Other Stuff

- Tools
- Build Systems
- Distributions
- Android
- Industry Organizations
- Events
- Miscellaneous





CE Workgroup

Tools

- QEMU
 - QEMU is being used everywhere, for device emulation (Android, Yocto)
 - Javascript QEMU implementation (!!)
- Eclipse
 - Is now de-facto “umbrella” tool for development
 - Need to pry seasoned developers away from command line
- Tracing
 - Perf, Ftrace and LTTng 2.0
 - Common Trace Format standard



CE Workgroup

Build Systems

- Yocto project
 - Umbrella project – has builder, eclipse tools, other things
 - OpenEmbedded and Yocto are getting integrated
 - Many talks at ELC and ELCE 2011
 - Sony is adopting Yocto
- Still lots of custom build systems out there



CE Workgroup

Embedded Distributions

- Tizen = MeeGo + Limo + (WAC technologies)
 - Was announced a few months ago
 - Nokia switching to Windows Mobile
 - Focus = HTML5 applications
 - <http://www.tizen.org/>
- WebOS
 - Open source announced, HP dropping project
- Legacy custom embedded
 - Still no “standard” embedded distribution



CE Workgroup

Android

- Android 4.0 SDK (Ice Cream Sandwich) released October 2011
- Ice Cream Sandwich unifies mobile, tablet and TV platforms in one codebase
- Phone activations at 900,000 per day
- Dalvik ported to non-Android
- Ubuntu for Android
 - Very interesting – use Android device as PC, when connected to dock (large screen and keyboard)



CE Workgroup

Distributions

1998 2000 2002 2004 2006 2008 2010

Embedix

Hardhat MontaVista

Denx ELDK

TimeSys Linux RT

LynuxWorks

Wind River Linux

Ångström

Poky

Yocto

Maemo

Moblin Meego Tizen

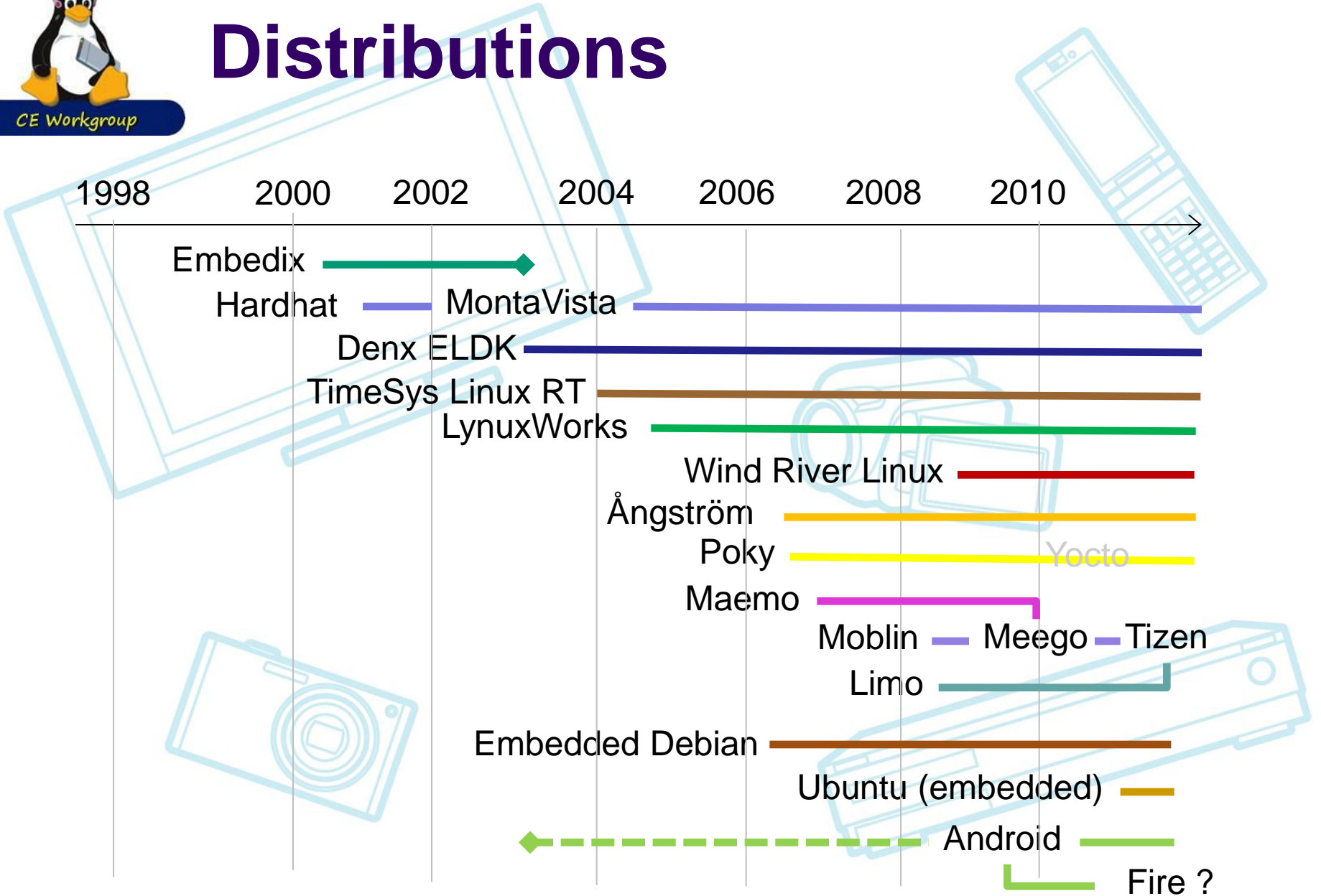
Limo

Embedded Debian

Ubuntu (embedded)

Android

Fire ?

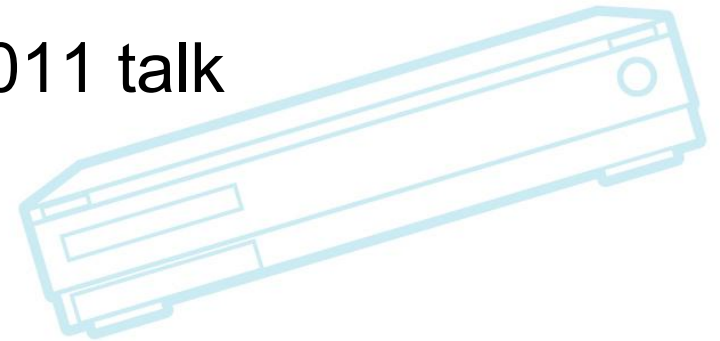
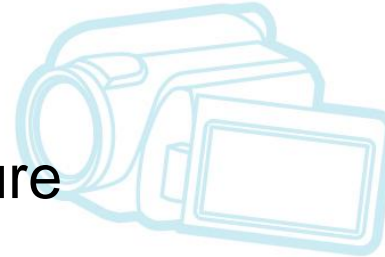
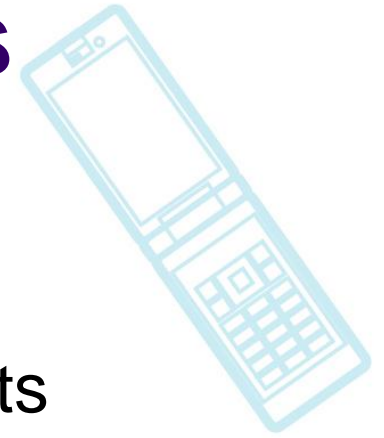




CE Workgroup

Industry organizations

- Linux Foundation
 - Has lots of embedded-related projects
 - Yocto, Tizen, LTSI
 - CE Workgroup
 - Now utilizing LF infrastructure
- Linaro
 - Doing lots of great stuff
 - See David Rusling's ELC 2011 talk





CE Workgroup

Events

- Embedded Linux Conference – February 2012
- Android Builders Summit – February 2012
- LinuxCon Japan – June 2012
 - Lots of great presentation – almost all online
- Japan Jamborees
 - Next = June 21, Nakano Sun Plaza, Tokyo
 - http://elinux.org/Japan_Technical_Jamboree_41
- Embedded Linux Conference Europe 2012
 - November 7-9, 2012
 - Barcelona, Spain



CE Workgroup

Miscellaneous

- Increased use of Stack Overflow
 - Great site for answering detailed development questions
 - See www.youtube.com/watch?v=NWHfY_IvKIQ
 - Google developers answer questions here
 - Search: “site:stackoverflow.com <question>”
- Raspberry Pi
 - Extremely low-cost development board - \$25
 - Targeted at students and hobbyists



CE Workgroup

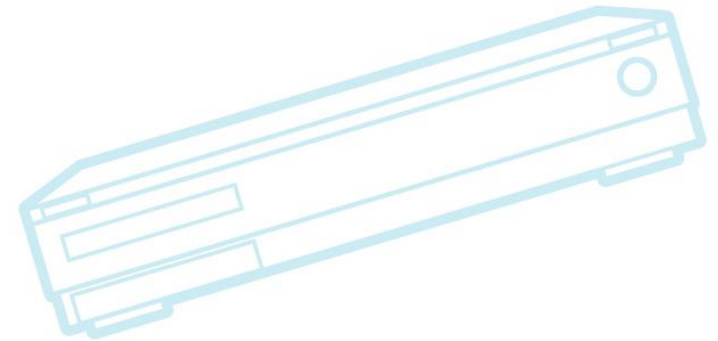
eLinux wiki

- <http://elinux.org>
 - Web site dedicated to information for embedded Linux developers
 - The wikipedia of embedded linux!
- Hundreds of page covering numerous topic areas: bootup time, realtime, security, power management, flash filesystem, toolchain, editors
 - Some areas have lots of content – some need work



CE Workgroup

Kernel Versions
Technology Areas
CE Workgroup Projects
Other Stuff
Resources





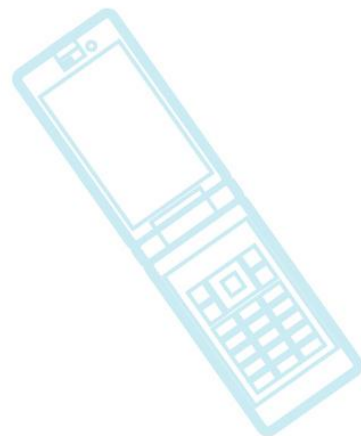
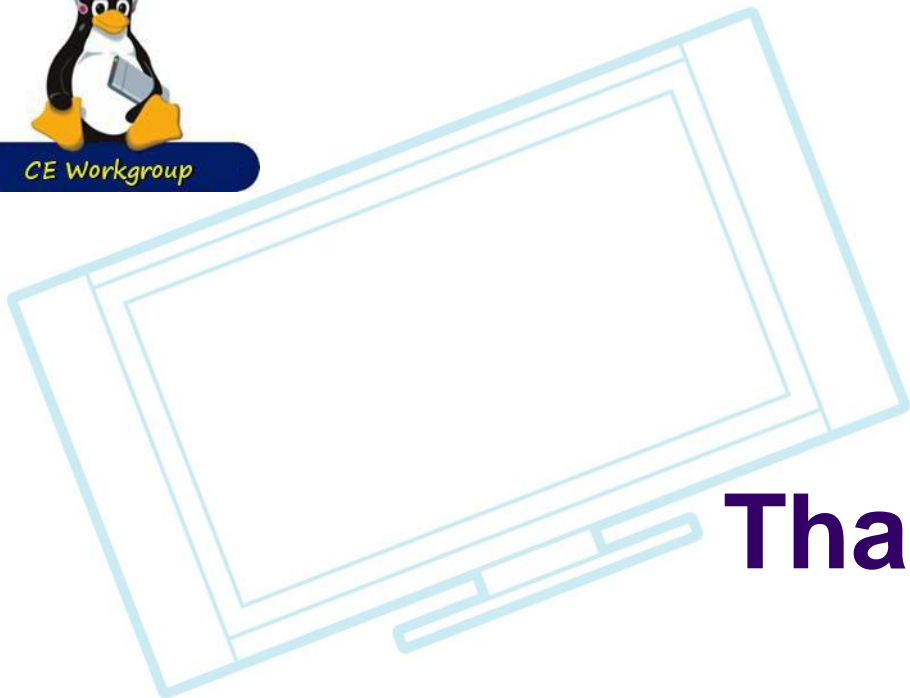
CE Workgroup

Resources

- LWN.net
 - <http://lwn.net/>
 - If you are not subscribed, please do so
- Kernel Newbies
 - http://kernelnewbies.org/Linux_2_6_??
- eLinux wiki - <http://elinux.org/>
 - Especially <http://elinux.org/Events> for slides
- Linux-embedded mailing list
 - <http://vger.kernel.org/vger-lists.html#linux-embedded>



CE Workgroup



Thanks!

