

# Designing Hardware-independent Testing Laboratory API

---

Paweł Wieczorek

August 22, 2019

Samsung R&D Institute Poland

Motivation

Testing laboratory layers

Case study

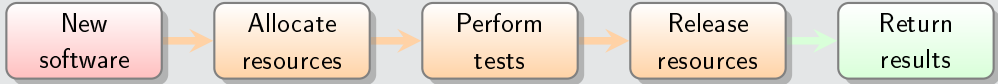
Summary

# Motivation

---

# Use cases

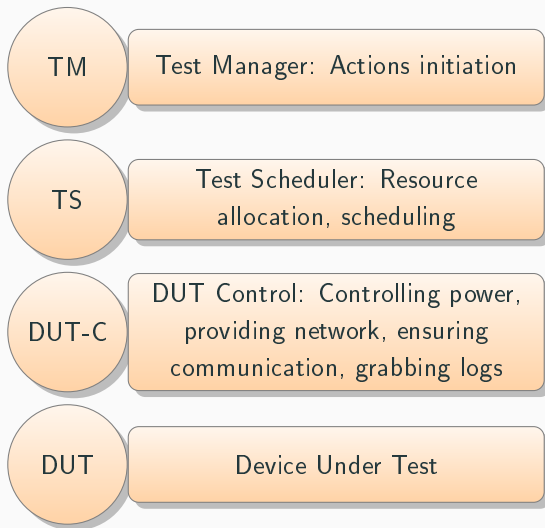
## Automated testing



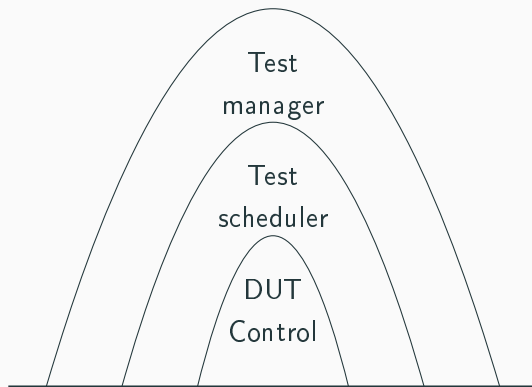
## Direct access (*hacking*)



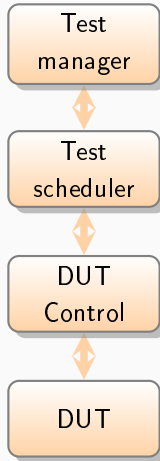
## Abstractions ([https://elinux.org/Test\\_Standards](https://elinux.org/Test_Standards))



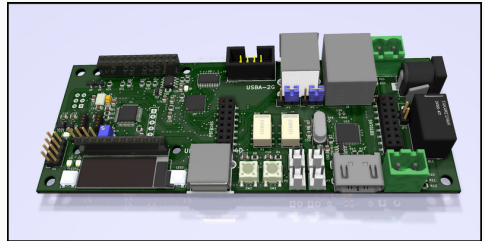
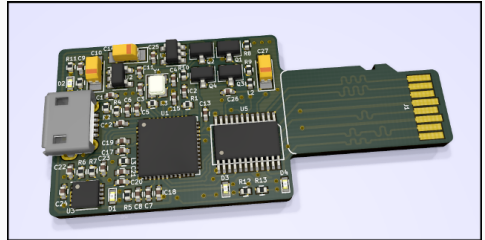
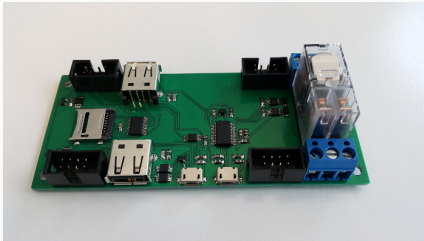
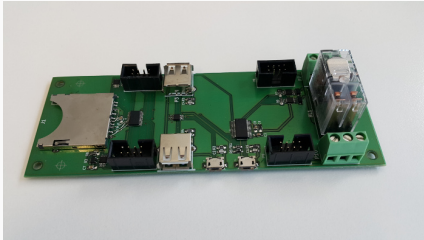
## Common laboratory structure



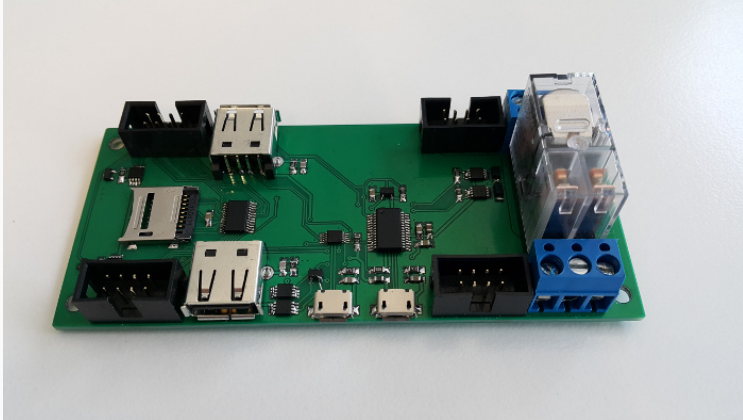
## Decoupled laboratory structure



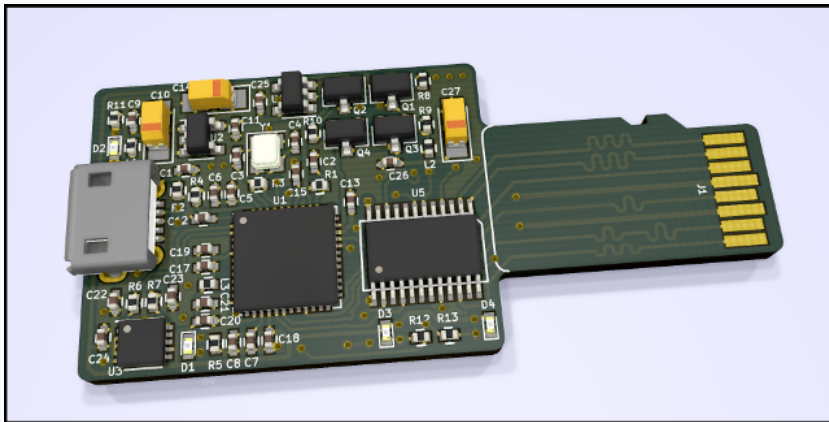
# Devices



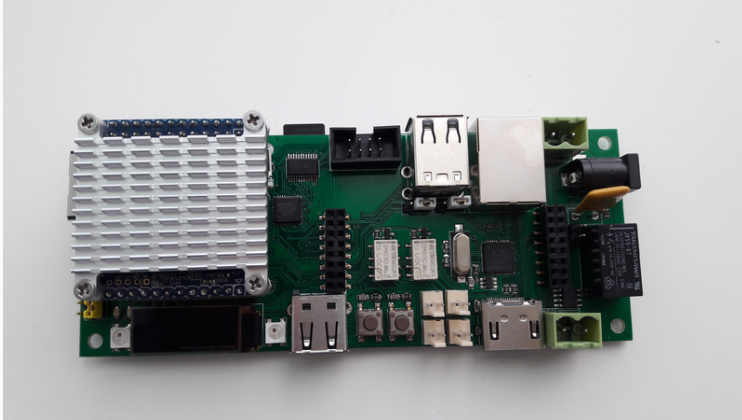




[https://wiki.tizen.org/SD\\_MUX](https://wiki.tizen.org/SD_MUX)



<https://wiki.tizen.org/SDWire>



<https://wiki.tizen.org/MuxPi>

## Testing laboratory layers

---

# Challenges

## Knowledge

Which actions are necessary? Where can it be performed? How to do it?

## Responsibilities

Who performs given action?

## Sharing

Who can use DUT? How can DUT be used?

# Implementation

## Test Manager (minimal)

- initiate actions
- list (or cancel) currently performed actions

## Test scheduler (generic)

- list available resources, request specific ones
- acquire assigned resources (then prolong, finally release)

## DUT Control (*tricky*)

- boot (and login)
- execute commands
- copy files

## Case study

---

## Strengths

- Requires only preparing test plan
- Test plans can be reused among various projects

## Weaknesses

- Keeping compliance
- Catching up with others (e.g. LAVA, SQUAD)



## Strengths

- Users treated equally
- Resource type-agnostic

## Weaknesses

- Requires additional agent
- Capabilities declared up front

## Strengths

- Only some knowledge required
- Unification possibility

## Weaknesses

- Hard initial setup
- Often unique for a given testing laboratory

## Summary

---

- Unable to demo without specific hardware
- Risky large scale deployments
- Responsibilities division allows easier onboarding

- User-centric approach resulted in smaller building blocks
- Smaller blocks could be easier swapped or used independently
- Improvement needs more *reuse* instead of *rewrite*

<https://github.com/SamsungSLAV>

Thank you!

Paweł Wieczorek  
p.wieczorek2@samsung.com