



Linux based 3G Specification

Multimedia Mobile Phone API

Packet Switched Communication Service

Document: [CELF_MPP_PS_FR2_20060608](#)

Deleted: D_v2.2.

Formatted: French (France)

Deleted: 3_20051223

Deleted: 4

Formatted: French (France)

WARNING : This is a working draft for review only, it is NOT a published specification of the CE Linux Forum. It is likely that further substantial changes will be made in the course of review and issue resolution. Send comments on this version to: MppApiComments@tree.celinuxforum.org

Deleted: 5

Revision History

Revision	Comment	Reviewer	Editor	Date
1.0	Initial		NEC/Panasonic	05/09/28
1.0.1	Editorial changes		John Mehaffey	05/09/28
1.0.2	Editorial changes		Christophe Guinet	05/10/24
1.0.3	Editorial changes		Christophe Guinet	05/11/03
2.2.1	Version change and new logo		Scott Preece	05/11/05
2.2.2	Updated with comments received during November face-to-face meeting in San Francisco	CELF MPPWG	Christophe Guinet	05/11/16
2.2.3	Updated with comments received during review	CELF MPPWG	Christophe Guinet	05/12/23
2.2.4 (FR2)	Updated after public review	CELF MPPWG	Christophe Guinet	2006/06/08

DRAFT

Deleted: 5

0. INTRODUCTION.....	6
0.1 REFERENCES.....	6
0.1.1 Normative.....	6
0.1.2 Informative.....	6
1. PRIMITIVES.....	7
1.1 CONSTANTS.....	7
1.1.1 CELF_MP_PS_HOST_MAX.....	7
1.1.2 CELF_MP_PS_APN_MAX.....	7
1.1.3 CELF_MP_PS_TITLE_MAX.....	7
1.1.4 CELF_MP_PS_DNS_RECORD_MAX.....	7
1.2 ENUMS.....	7
1.2.1 CelfMpPsEvent.....	7
1.2.2 CelfMpPsApnId.....	7
1.2.3 CelfMpPsApnInit.....	8
1.2.4 CelfMpPsConn.....	8
1.2.5 CelfMpPsApnMode.....	8
1.2.6 CelfMpPsExtEventSet.....	8
1.2.7 CelfMpPsPdpType.....	8
1.2.8 CelfMpPsEventClass.....	8
1.2.9 CelfMpPsUPlane.....	8
1.2.10 CelfMpPsStatus.....	8
1.3 DATA TYPES AND STRUCTURES.....	9
1.3.1 CelfMpPsHost.....	9
1.3.2 CelfMpPsApn.....	9
1.3.3 CelfMpPsDnsRec.....	9
1.3.4 CelfMpPsTitle.....	9
1.3.5 CelfMpPsApnHostData.....	9
1.3.6 CelfMpPsEventSet.....	9
1.4 EVENTS TYPE.....	9
1.4.1 Packet switched call state notification event.....	9
1.4.2 Packet switched service status notification event.....	10
1.4.3 Packet switched call activity notification event.....	11
1.4.4 External equipment status notification event.....	11
2. START PACKET SWITCHED COMMUNICATION NOTIFICATION.....	12
2.1 SYMBOL: CELF_MP_PS_NOTIFICATION_START.....	12
2.1.1 Syntax.....	12
2.1.2 Argument.....	12
2.1.3 Return Value.....	12
2.1.4 Include File.....	12
2.1.5 Functional Description.....	12
3. STOP PACKET SWITCHED COMMUNICATION NOTIFICATION.....	14
3.1 SYMBOL: CELF_MP_PS_NOTIFICATION_STOP.....	14
3.1.1 Syntax.....	14
3.1.2 Argument.....	14
3.1.3 Return Value.....	14
3.1.4 Include File.....	14
3.1.5 Functional Description.....	14
4. GET PACKET SWITCHED COMMUNICATION STATUS.....	15
4.1 SYMBOL: CELF_MP_PS_COM_STATUS_GET.....	15
4.1.1 Syntax.....	15
4.1.2 Argument.....	15
4.1.3 Return Value.....	15
4.1.4 Include File.....	15
4.1.5 Functional Description.....	15
5. REQUEST PACKET SWITCHED COMMUNICATION CONNECTION.....	16
5.1 SYMBOL: CELF_MP_PS_CONNECT.....	16

Deleted: 5

- [5.1.1 Syntax..... 16](#)
- [5.1.2 Argument..... 16](#)
- [5.1.3 Return Value..... 16](#)
- [5.1.4 Include File..... 16](#)
- [5.1.5 Functional Description 16](#)
- [6. RESPONSE TO A NETWORK REQUEST FOR PACKET SWITCHED CONNECTION..... 18](#)**
- [6.1 SYMBOL: CELF MP PS CONNECT RSP 18](#)
- [6.1.1 Syntax..... 18](#)
- [6.1.2 Argument..... 18](#)
- [6.1.3 Return Value..... 18](#)
- [6.1.4 Include File..... 18](#)
- [6.1.5 Functional Description 18](#)
- [7. REQUEST THE DEACTIVATION OF PACKET SWITCHED COMMUNICATION 19](#)**
- [7.1 SYMBOL: CELF MP PS CALL DISCONNECT..... 19](#)
- [7.1.1 Syntax..... 19](#)
- [7.1.2 Argument..... 19](#)
- [7.1.3 Return Value..... 19](#)
- [7.1.4 Include File..... 19](#)
- [7.1.5 Functional Description 19](#)
- [8. SPECIFY APN SETTINGS 20](#)**
- [8.1 SYMBOL: CELF MP PS APN SET 20](#)
- [8.1.1 Syntax..... 20](#)
- [8.1.2 Argument..... 20](#)
- [8.1.3 Return Value..... 20](#)
- [8.1.4 Include File..... 20](#)
- [8.1.5 Functional Description 20](#)
- [9. GET APN SETTINGS 21](#)**
- [9.1 SYMBOL: CELF MP PS APN GET..... 21](#)
- [9.1.1 Syntax..... 21](#)
- [9.1.2 Argument..... 21](#)
- [9.1.3 Return Value..... 21](#)
- [9.1.4 Include File..... 21](#)
- [9.1.5 Functional Description 21](#)
- [10. SELECT APN FOR PACKET SWITCHED COMMUNICATION 22](#)**
- [10.1 SYMBOL: CELF MP PS APN SELECT..... 22](#)
- [10.1.1 Syntax..... 22](#)
- [10.1.2 Argument..... 22](#)
- [10.1.3 Return Value..... 22](#)
- [10.1.4 Include File..... 22](#)
- [10.1.5 Functional Description 22](#)
- [11. GET APN USED FOR PACKET SWITCHED COMMUNICATION 23](#)**
- [11.1 SYMBOL: CELF MP PS APN ID GET 23](#)
- [11.1.1 Syntax..... 23](#)
- [11.1.2 Argument..... 23](#)
- [11.1.3 Return Value..... 23](#)
- [11.1.4 Include File..... 23](#)
- [11.1.5 Functional Description 23](#)
- [12. FORCE DEACTIVATION OF A PACKET COMMUNICATION..... 24](#)**
- [12.1 SYMBOL: CELF MP PS FORCE DISCONNECT..... 24](#)
- [12.1.1 Syntax..... 24](#)
- [12.1.2 Argument..... 24](#)
- [12.1.3 Return Value..... 24](#)
- [12.1.4 Include File..... 24](#)
- [12.1.5 Functional Description 24](#)
- [13. GET USER PLANE CONNECTION STATUS 25](#)**
- [13.1 SYMBOL: CELF MP PS UPLANE STATUS GET 25](#)
- [13.1.1 Syntax..... 25](#)
- [13.1.2 Argument..... 25](#)

Deleted: 5

13.1.3	Return Value.....	25
13.1.4	Include File.....	25
13.1.5	Functional Description.....	25
14.	GET DNS RECORD NAME.....	26
14.1	SYMBOL: CELF MP PS DNS RECORD GET.....	26
14.1.1	Syntax.....	26
14.1.2	Argument.....	26
14.1.3	Return Value.....	26
14.1.4	Include File.....	26
14.1.5	Functional Description.....	26
15.	GET DEFAULT APN MODE.....	27
15.1	SYMBOL: CELF MP PS APN MODE GET.....	27
15.1.1	Syntax.....	27
15.1.2	Argument.....	27
15.1.3	Return Value.....	27
15.1.4	Include File.....	27
15.1.5	Functional Description.....	27
16.	FORCE DEACTIVATION OF ALL PACKET SWITCHED COMMUNICATIONS.....	28
16.1	SYMBOL: CELF MP PS SERVICE SHUTDOWN.....	28
16.1.1	Syntax.....	28
16.1.2	Argument.....	28
16.1.3	Return Value.....	28
16.1.4	Include File.....	28
16.1.5	Functional Description.....	28
17.	REQUEST APN INITIALIZATION.....	29
17.1	SYMBOL: CELF MP PS APN INITIALIZE.....	29
17.1.1	Syntax.....	29
17.1.2	Argument.....	29
17.1.3	Return Value.....	29
17.1.4	Include File.....	29
17.1.5	Functional Description.....	29
18.	START MONITORING EXTERNAL EQUIPMENT FOR PACKET SWITCHED COMMUNICATION.....	30
18.1	SYMBOL: CELF MP PS EXT DEVICE NOTIFICATION START.....	30
18.1.1	Syntax.....	30
18.1.2	Argument.....	30
18.1.3	Return Value.....	30
18.1.4	Include File.....	30
18.1.5	Functional Description.....	30
19.	STOP MONITORING EXTERNAL EQUIPMENT FOR PACKET SWITCHED COMMUNICATION.....	31
19.1	SYMBOL: CELF MP PS EXT DEVICE NOTIFICATION STOP.....	31
19.1.1	Syntax.....	31
19.1.2	Argument.....	31
19.1.3	Return Value.....	31
19.1.4	Include File.....	31
19.1.5	Functional Description.....	31
20.	ANNEX 1 - PS OUTGOING CONNECTION.....	32
21.	ANNEX 2 – PS INCOMING CONNECTION.....	33
22.	ANNEX 3 – PACKET SWITCHED COMMUNICATION STATUS AND EVENTS.....	34

Deleted: 5

0. Introduction

Packet Switched Communication Service (PS Service) has the function of the packet call control and the packet data sending and receiving.

Packet Switched Communication Service includes PPP dial-up communication service and IP connection data transfer service.

Exclusions and restrictions

The following exclusions and restrictions apply to the current version of the specification:

- This specification has been written for packet switched communication in WCDMA context. Although it may be applicable to other bearers and technologies, it has not been studied in the current version
- only one PDP context could be active at a time
- an application shall not call several PS services in parallel using the same app_id

Formatted: Font: Bold, Italic

Formatted: Font: Bold, Italic

Formatted: Bullets and Numbering

0.1 References

0.1.1 Normative

RFC 2119: "Key words for use in RFCs to Indicate Requirement Levels", S. Bradner, March 1997, URL: <http://www.ietf.org/rfc/rfc2119.txt>

Deleted: ,

RFC 2234: "Augmented BNF for Syntax Specifications: ABNF". D. Crocker, P. Overell. November 1997, URL: <http://www.ietf.org/rfc/rfc2234.txt>

Formatted: English (U.S.)

Deleted: Ed.,

RFC 2396: "Uniform Resource Identifiers (URI): Generic Syntax". T. Berners-Lee, R. Fielding, U.C. Irvine, L. Masinter. August 1998, URL: <http://www.ietf.org/rfc/rfc2396.txt>

Deleted: ¶

Formatted: Normal

0.1.2 Informative

3GPP TS 23.060 General Packet Radio Service (GPRS); Service Description; Stage 2
URL: http://www.3gpp.org/ftp/Specs/2005-09/Rel-5/23_series/23060-5b0.zip

Formatted: Swedish (Sweden)

Field Code Changed

Formatted: Swedish (Sweden)

Formatted: Swedish (Sweden)

Deleted: 5

1. Primitives

1.1 Constants

1.1.1 CELF_MP_PS_HOST_MAX

Description: Maximum length of the character string for the ISP (Internet Service Provider) URL

1.1.2 CELF_MP_PS_APN_MAX

Description: Maximum length of the character string for the APN

1.1.3 CELF_MP_PS_TITLE_MAX

Description: Maximum length of the character string for the APN title string

1.1.4 CELF_MP_PS_DNS_RECORD_MAX

Description: Maximum length of the character string for the DNS record

1.2 Enums

1.2.1 CelfMpPsEvent

Description: [Packet Switched events. Refer to section 1.4 for detailed description.](#)

Definition:

- [CELF_MP_PS_IN_START_IND](#)
- [CELF_MP_PS_IN_REJ_IND](#)
- [CELF_MP_PS_OUT_START_IND](#)
- [CELF_MP_PS_OUT_REJ_IND](#)
- CELF_MP_PS_CONNECT_START_IND
- CELF_MP_PS_DISCONNECT_REQ
- CELF_MP_PS_DEACTIVATE_CNF
- CELF_MP_PS_DEACTIVATE_IND
- CELF_MP_PS_EMISSION_SETUP_RSP
- CELF_MP_PS_CALLED_SETUP_RSP
- CELF_MP_PS_CALLED_REJ_REQ
- CELF_MP_PS_CALLED_END_IND
- CELF_MP_PS_SERVICE_RING
- CELF_MP_PS_SERVICE_ERROR
- CELF_MP_PS_SERVICE_OK
- CELF_MP_PS_CONTROL_DISCONNECT
- CELF_MP_PS_DATA_SEND_IND
- CELF_MP_PS_DATA_RECV_IND
- CELF_MP_PS_APN_INIT_END_IND

Deleted: APN number

Deleted: CELF_MP_PS_RECEPTIO
N_START_IND

Deleted: CELF_MP_PS_EMISSION
_START_IND

Deleted: CELF_MP_PS_RECEPTIO
N_REJ_IND
CELF_MP_PS_EMISSION_REJ_IND

1.2.2 CelfMpPsApnId

Description: APN number. [The default APN is a fixed APN configuration personalized at implementation / factory. The other 10 APN configurations could be modified and a PS configuration application should exist to allow the user to edit these configurations using `celf_mp_ps_apn_set\(\)`.](#)

Definition:

- CELF_MP_PS_APN_DEFAULT : Default setting
- CELF_MP_PS_APN_USERSET1 : User-specified 1
- CELF_MP_PS_APN_USERSET2 : User-specified 2
- CELF_MP_PS_APN_USERSET3 : User-specified 3
- CELF_MP_PS_APN_USERSET4 : User-specified 4
- CELF_MP_PS_APN_USERSET5 : User-specified 5
- CELF_MP_PS_APN_USERSET6 : User-specified 6
- CELF_MP_PS_APN_USERSET7 : User-specified 7
- CELF_MP_PS_APN_USERSET8 : User-specified 8

Deleted: 5

Classification: Packet Switched Communication Service

CELF_MP_PS_APN_USERSET9 : User-specified 9
CELF_MP_PS_APN_USERSET10 : User-specified 10

1.2.3 CelfMpPsApnInit

Description: result of the APN initialization

Definition:

CELF_MP_PS_UIM_UPDATED : Successful, UIM updated
CELF_MP_PS_UIM_NOT_UPDATED : Successful, UIM not updated
CELF_MP_PS_AUTH_ERR : Failure returned from the authentication service

1.2.4 CelfMpPsConn

Description: accept or reject an incoming PS connection

Definition:

CELF_MP_PS_COM_CONN_ACCEPT : Accept incoming PS connection
CELF_MP_PS_COM_CONN_REJECT : Reject incoming PS connection

1.2.5 CelfMpPsApnMode

Description: default APN settings

Definition:

CELF_MP_PS_DEFAULT_APN_MS : APN settings stored in the mobile phone
CELF_MP_PS_DEFAULT_APN_UIM : APN settings stored in the UIM

1.2.6 CelfMpPsExtEventSet

Description: External Equipment Event Notification class

Definition:

CELF_MP_PS_EXT_EVENT_APN_INIT_END : Notification of APN initialization completed
CELF_MP_PS_EXT_EVENT_CLASS_ALL : All

1.2.7 CelfMpPsPdpType

Description: PDP type

Definition:

CELF_MP_PS_PDP_TYPE_X25 : X.25 connection
CELF_MP_PS_PDP_TYPE_IP : IP connection
CELF_MP_PS_PDP_TYPE_OSPIH : OSPIH connection
CELF_MP_PS_PDP_TYPE_PPP : PPP (IP based PPP)
CELF_MP_PS_PDP_TYPE_IPv6 : IPv6 connection

1.2.8 CelfMpPsEventClass

Description: Event notification class

Definition:

CELF_MP_PS_CLASS_CALL_STATE_MSG : PS call status message notification (except for data emission / reception)
CELF_MP_PS_CLASS_SERVICE_STATE_MSG : PS service status message notification
CELF_MP_PS_CLASS_CALL_DATA_MSG : PS call activity (data emission / reception) message notification
CELF_MP_PS_CLASS_ALL : All

Deleted: CelfMpPsEventSet

1.2.9 CelfMpPsUPlane

Description: User Plane connection status

Definition:

CELF_MP_PS_UPLANE_ON : U-Plane connected
CELF_MP_PS_UPLANE_OFF : U-Plane not connected

1.2.10 CelfMpPsStatus

Description: status of the current PS communication. [Refer to Annex 3 – Packet switched communication status](#)

Deleted: 5

Definition:

CELF_MP_PS_STATUS_IDLE : Communication ended (idle)
 CELF_MP_PS_STATUS_CONNECT_IN : Connecting for incoming call
 CELF_MP_PS_STATUS_CONNECT_OUT : Connecting for outgoing call
 CELF_MP_PS_STATUS_ACTIVE : Communication active (C-Plane active)
 CELF_MP_PS_STATUS_DISCONNECT : Disconnecting

Deleted: EMPTY

Deleted: ACCEP_

Deleted: Connected

Deleted:

Deleted: Connected

Deleted: Disconnected

1.3 Data Types and Structures

1.3.1 CelfMpPsHost

Description: It contains the ISP (Internet Service Provider) URL string terminated by a NULL character '\0'. The allowable size is 1 to CELF_MP_PS_HOST_MAX.

Definition: unsigned char[CELF_MP_PS_HOST_MAX + 1]

1.3.2 CelfMpPsApn

Description: It contains the Access Point Name string terminated by a NULL character '\0'. The allowable size is 1 to CELF_MP_PS_APN_MAX.

Definition: unsigned char[CELF_MP_PS_APN_MAX + 1]

1.3.3 CelfMpPsDnsRec

Description: It contains the DNS record name string terminated by a NULL character '\0'. The allowable size is 1 to CELF_MP_PS_DNS_RECORD_MAX.

Definition: unsigned char [CELF_MP_PS_DNS_RECORD_MAX + 1]

1.3.4 CelfMpPsTitle

Description: It contains the title string for the APN terminated by a NULL character '\0'. The allowable size is 1 to CELF_MP_PS_TITLE_MAX.

Definition: unsigned char[CELF_MP_PS_TITLE_MAX + 1]

1.3.5 CelfMpPsApnHostData

Description: APN/host data structure

Definition:

APN/host data structure

```

typedef struct {
    CelfMpPsApnId    apn_id ;
    CelfMpPsApn     apn ;
    CelfMpPsHost    host ;
    CelfMpPsTitle   title ;
} CelfMpPsApnHostData;
    
```

Deleted: Apn

Deleted: Host

Deleted: Title

1.3.6 CelfMpPsEventSet

Description: Bit field where each bit corresponds to a PS event class to be registered. The PS event classes are defined by the enum CelfMpPsEventClass.

Definition: unsigned int

Formatted: Bullets and Numbering

Formatted: Normal

1.4 Events type

1.4.1 Packet switched call state notification event

In this sub-section, the associated data structure is [CelfMpEvent](#) with the following values:

Deleted: CELF_MP_EVENT

```

category = PacketNotify;
subtype = PacketNotify_Call_State;
    
```

The value of the field 'info' is the event from enum CelfMpPsEvent.

Deleted: 5

Classification: Packet Switched Communication Service

1.4.1.1 CELF_MP_PS_IN_START_IND

Description: It notifies the start of packet switched reception

Deleted: CELF_MP_PS_RECEPTIO
N_START_IND

1.4.1.2 CELF_MP_PS_OUT_START_IND

Description: It notifies the start of packet switched emission

Deleted: CELF_MP_PS_EMISSION
_START_IND

1.4.1.3 CELF_MP_PS_IN_REJ_IND

Description: It notifies the rejection of packet switched reception

Deleted: CELF_MP_PS_RECEPTIO
N_REJ_IND

1.4.1.4 CELF_MP_PS_OUT_REJ_IND

Description: It notifies the rejection of packet switched emission

Deleted: CELF_MP_PS_EMISSION
_REJ_IND

1.4.1.5 CELF_MP_PS_CONNECT_START_IND

Description: It notifies the start of packet switched connection

1.4.1.6 CELF_MP_PS_DISCONNECT_REQ

Description: Notification of packet disconnecting (on mobile station) indication started

1.4.1.7 CELF_MP_PS_DEACTIVATE_CNF

Description: Notification of packet disconnecting indication ended

1.4.1.8 CELF_MP_PS_DEACTIVATE_IND

Description: Notification of packet disconnecting (on network) completed

1.4.1.9 CELF_MP_PS_EMISSION_SETUP_RSP

Description: Notification of transmission record registered

1.4.1.10 CELF_MP_PS_CALLED_SETUP_RSP

Description: Notification of termination record registered

1.4.1.11 CELF_MP_PS_CALLED_REJ_REQ

Description: Notification of missed termination record registered

1.4.1.12 CELF_MP_PS_CALLED_END_IND

Description: Notification of packet termination indication ended

1.4.2 Packet switched service status notification event

In this sub-section, the associated data structure is [CelfMpEvent](#) with the following parameters:

Deleted: CELF_MP_EVENT

```
category = PacketNotify;  
subtype = PacketNotify_Service_State;
```

The value of the field 'info' is the event from enum CelfMpPsEvent.

1.4.2.1 CELF_MP_PS_SERVICE_RING

Description: packet switched service establishment

1.4.2.2 CELF_MP_PS_SERVICE_ERROR

Description: packet switched service ERROR

1.4.2.3 CELF_MP_PS_SERVICE_OK

Description: packet switched service OK (successful completion of primitive)

Deleted: 5

1.4.2.4 CELF_MP_PS_CONTROL_DISCONNECT

Description: packet switched service DISCONNECT

1.4.3 Packet switched call activity notification event

In this sub-section, the associated data structure is [CelfMpEvent](#) with the following parameters:

```
category = PacketNotify;  
subtype = PacketNotify_Call_Data;
```

The value of the field 'info' is the event from enum CelfMpPsEvent.

1.4.3.1 CELF_MP_PS_DATA_SEND_IND

Description: Data emission notification

1.4.3.2 CELF_MP_PS_DATA_RECV_IND

Description: Data reception notification

1.4.4 External equipment status notification event

In this sub-section, the associated data structure is [CelfMpEvent](#) with the following parameters:

```
category = PacketNotify;  
subtype = PacketNotify_Apn_Init_End;
```

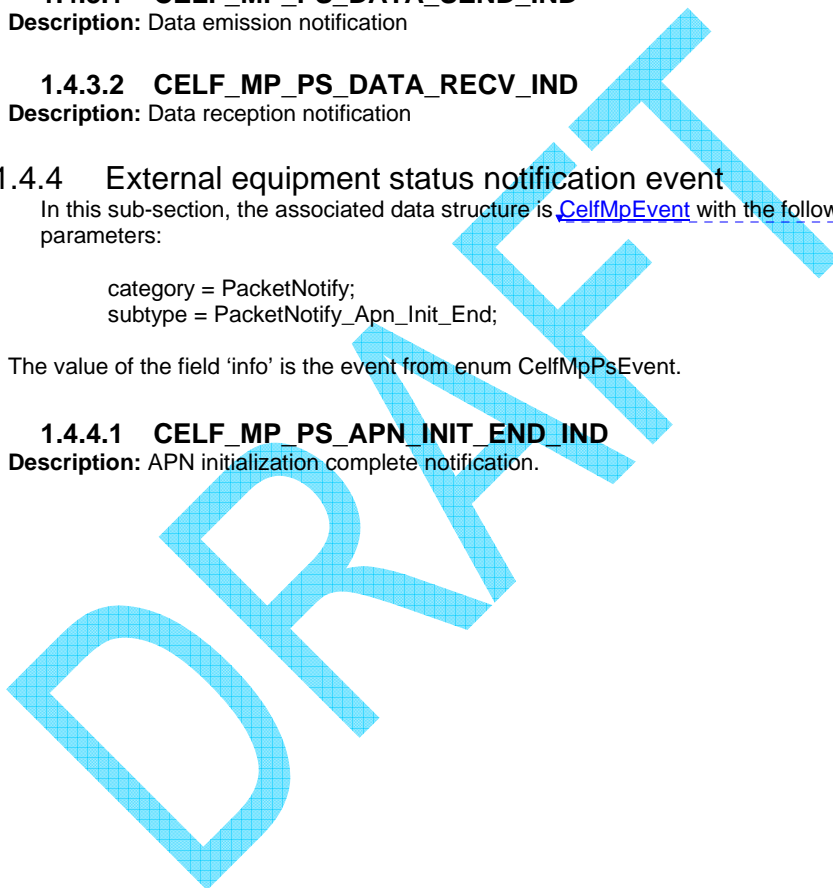
The value of the field 'info' is the event from enum CelfMpPsEvent.

1.4.4.1 CELF_MP_PS_APN_INIT_END_IND

Description: APN initialization complete notification.

Deleted: CELF_MP_EVENT

Deleted: CELF_MP_EVENT



Deleted: 5

2. Start packet switched communication notification

2.1 Symbol: `celf_mp_ps_notification_start`

2.1.1 Syntax

```

CelfMpStatus   celf_mp_ps_notification_start (
    CelfMpAppld      app_id,
    CelfMpPsEventSet event_set,
    CelfMpCallback   callback_func );
    
```

2.1.2 Argument

Name: `app_id`
Type: `CelfMpAppld`
I/O: |
Description: Application identifier.

Name: `event_set`
Type: `CelfMpPsEventSet`
I/O: |

Description: Set of [PS event classes](#). Events belonging to one of the [CelfMpPsEventClass](#) classes **may** be registered to have a callback function called when the event occurs for the application identified by `app_id`. Classes of events are selected by setting the corresponding bit in `event_set`.

Name: `callback_func`
Type: `CelfMpCallback`
I/O: |

Description: The callback function that shall be called when an event occurs from one of the classes registered in `event_set`.

2.1.3 Return Value

Type: `CelfMpStatus`

Description: `celf_mp_ps_notification_start ()` shall return one of the following values :

- CELf_MP_STATUS_OK: Successful completion
- CELf_MP_STATUS_APP_ID_ERR: Invalid Application ID
- CELf_MP_STATUS_EVENT_SET_ERR: The set of event is invalid
- CELf_MP_STATUS_ERR: Other unsuccessful completion

2.1.4 Include File

`/usr/include/celf/mp_ps.h`

2.1.5 Functional Description

[This function is a synchronous service.](#)

This function is used to start notification for events related to packet switched communication. Events from a registered class **shall** cause the registered callback function to be called when the event occurs for the application identified by `app_id`. If a class of events does not have a registered callback function, no callback shall occur for those events.

Different callback functions **may** be registered for different classes of events. Only the most recently registered callback for an event class **shall** be called when an event of that class occurs, and no notification shall be given when a callback for an event class is superseded. Callbacks **may** be canceled using the `celf_mp_ps_notification_stop()` function.

The following notification event classes **shall** be supported:

- CELf_MP_PS_CLASS_CALL_STATE_MSG
- CELf_MP_PS_CLASS_SERVICE_STATE_MSG
- CELf_MP_PS_CLASS_CALL_DATA_MSG

Deleted: notification events

Formatted: Indent: Left: 0.39"

Deleted: CelfMpPsEventSet

Deleted: ¶

Deleted: The following notification event classes **shall** be supported:¶
 CELf_MP_PS_CLASS_CALL_STAT
 E_MSG¶
 CELf_MP_PS_CLASS_SERVICE_S
 TATE_MSG¶
 CELf_MP_PS_CLASS_CALL_DATA
 _MSG¶
 ¶
 A callback may be registered for all classes of events using the special event class
 CELf_MP_PS_CLASS_ALL,
 however to reduce overhead it is recommended that only the needed event classes should be registered.¶

Deleted: 5

A callback may be registered for all classes of events using the special event class CELF_MP_PS_CLASS_ALL, however to reduce overhead it is recommended that only the needed event classes should be registered.

Formatted: Normal Indent, Indent: Left: 1.13"

In case the parameter event_set contains a bit set not defined in CelfMpPsEventClass the error CELF_MP_STATUS_EVENT_SET_ERR shall be returned.

Formatted: Normal, Indent: Left: 0.39"

Formatted: Indent: Left: 0", Hanging: 0.35", Outline numbered + Level: 1 + Numbering Style: 1, 2, 3, ... + Start at: 0 + Alignment: Left + Aligned at: 0" + Tab after: 0.35" + Indent at: 0.35"

DRAFT

Deleted: 5

3. Stop packet switched communication notification

Deleted: Stop packet

3.1 Symbol: celf_mp_ps_notification_stop

Formatted: Bullets and Numbering

3.1.1 Syntax

```
CelfMpStatus celf_mp_ps_notification_stop (
    CelfMpAppId app_id,
    CelfMpPsEventSet event_set);
```

3.1.2 Argument

Name: app_id
Type: CelfMpAppId
I/O: I
Description: Application identifier.

Name: event_set
Type: CelfMpPsEventSet
I/O: I

Description: Set of [PS event classes](#) (see 2. Start packet switched communication notification).

Deleted: notification events

3.1.3 Return Value

Type: CelfMpStatus

Description: `celf_mp_ps_notification_stop ()` shall return one of the following values :

- CELF_MP_STATUS_OK: Successful completion
- CELF_MP_STATUS_APP_ID_ERR: Invalid Application ID
- CELF_MP_STATUS_EVENT_SET_ERR: The set of event is invalid
- CELF_MP_STATUS_ERR: Other unsuccessful completion

3.1.4 Include File

/usr/include/celf/mp_ps.h

3.1.5 Functional Description

[This function is a synchronous service.](#)

This function stops notification callbacks for the selected event classes related to packet switched communication.

Events from the classes identified by event_set shall have their callbacks cancelled for the application identified by app_id. If no callback is registered for a selected class, no error shall occur.

To restart callbacks for these event classes, the application must call `celf_mp_ps_notification_start()` again.

For more information about packet communication classes, see 2. Start packet switched communication notification.

Deleted: ,

Deleted: (

Deleted:)

Deleted: 5

4. Get packet switched communication status

4.1 Symbol: `celf_mp_ps_com_status_get`

4.1.1 Syntax

```

CelfMpStatus celf_mp_ps_com_status_get (
    CelfMpAppId app_id,
    CelfMpPsPdpType pdp_type,
    CelfMpPsStatus * status);
    
```

4.1.2 Argument

Name: `app_id`
Type: `CelfMpAppId`
I/O: I
Description: Application identifier.

Name: `pdp_type`
Type: `CelfMpPsPdpType`
I/O: I
Description: This parameter **shall** have one of the following values :
`CELF_MP_PS_PDP_TYPE_X25`
`CELF_MP_PS_PDP_TYPE_IP`
`CELF_MP_PS_PDP_TYPE_OSPIH`
`CELF_MP_PS_PDP_TYPE_PPP`
`CELF_MP_PS_PDP_TYPE_IPv6`

Name: `status`
Type: `CelfMpPsStatus`
I/O: O
Description: [packet switched communication status](#) :
`CELF_MP_PS_EMPTY`: Communication ended (idle)
`CELF_MP_PS_ACCEP_CONN`: Connected for incoming call
`CELF_MP_PS_CONNECT`: Connected for outgoing call
`CELF_MP_PS_ACTIVE`: Communication active (C-Plane active)
`CELF_MP_PS_DISCONNECT`: Disconnected

Formatted: Polish

Deleted: `celf_mp_ps_com_status_get ()` shall return one of the following values

4.1.3 Return Value

Type: `CelfMpStatus`
Description: `celf_mp_ps_com_status_get ()` shall return one of the following values :
`CELF_MP_STATUS_OK`: Successful completion
`CELF_MP_STATUS_APP_ID_ERR`: Invalid Application ID
`CELF_MP_STATUS_PS_PDP_TYPE_ERR`: unsupported PDP type
`CELF_MP_STATUS_ERR`: Other unsuccessful completion

4.1.4 Include File

`/usr/include/celf/mp_ps.h`

4.1.5 Functional Description

[This function is a synchronous service.](#)

This function **shall** return the current packet communication status of the specified PDP type for the application identified by `app_id`. It is not necessary to call `celf_mp_ps_notification_start ()` to use `celf_mp_ps_com_status_get()`.

`pdp_type` **must** be an individual enumerator (`pdp_type` does not allow the OR operator)

Deleted: 5

5. Request packet switched communication connection

5.1 Symbol: `celf_mp_ps_connect`

5.1.1 Syntax

```

CelfMpStatus celf_mp_ps_connect (
    CelfMpAppId app_id,
    CelfMpPsPdpType pdp_type);

```

5.1.2 Argument

Name: `app_id`
Type: `CelfMpAppId`
I/O: I
Description: Application identifier.

Name: `pdp_type`
Type: `CelfMpPsPdpType`
I/O: I
Description: This parameter **shall** have one of the following values :
`CELf_MP_PS_PDP_TYPE_X25`
`CELf_MP_PS_PDP_TYPE_IP`
`CELf_MP_PS_PDP_TYPE_OSPIH`
`CELf_MP_PS_PDP_TYPE_PPP`
`CELf_MP_PS_PDP_TYPE_IPv6`

5.1.3 Return Value

Type: `CelfMpStatus`
Description: `celf_mp_ps_connect ()` **shall** return one of the following values :
`CELf_MP_STATUS_OK:` Successful completion
`CELf_MP_STATUS_APP_ID_ERR:` [Invalid Application ID](#)
`CELf_MP_STATUS_PS_PDP_TYPE_ERR:` unsupported PDP type
`CELf_MP_STATUS_PS_DENIED:` Request rejected by network due to no subscription to packet communication service
`CELf_MP_STATUS_ERR:` Other error

5.1.4 Include File

`/usr/include/celf/mp_ps.h`

5.1.5 Functional Description

[This function is an asynchronous service.](#)
This function **shall** open a packet communication channel of the specified type for the application specified by `app_id`. [The APN setting to be used for packet switched communication should have been selected using `celf_mp_ps_apn_select\(\)`.](#)

[The application is notified through events of the progress and the completion of the processing. refer to sequence chart in Annex 1.](#)

When the processing of this function is started by MPP, it **shall** cause the [CELf_MP_PS_OUT_START_IND](#) event to occur. Applications **should** wait for this message before starting another MPP packet switched service related function call.

Deleted: CELf_MP_PS_EMISSION_START_IND

If the channel is successfully opened, it **shall** cause the `CELf_MP_PS_SERVICE_OK` event to occur.

Deleted: 5

If the channel is not successfully opened, it **shall** cause the CELF_MP_PS_CONTROL_ERR event to occur.

DRAFT

6. Response to a network request for packet switched connection

6.1 Symbol: `celf_mp_ps_connect_rsp`

6.1.1 Syntax

```

CelfMpStatus   celf_mp_ps_connect_rsp (
    CelfMpAppId   app_id,
    CelfMpPsConn  type,
    CelfMpCallRef call_ref );

```

6.1.2 Argument

Name: `app_id`
Type: `CelfMpAppId`
I/O: I
Description: Application identifier.

Name: `type`
Type: `CelfMpPsConn`
I/O: I
Description: CELF_MP_PS_COM_CONN_ACCEPT: Accept incoming
 CELF_MP_PS_COM_CONN_REJECT: Reject incoming

Name: `call_ref`
Type: `CelfMpCallRef`
I/O: I
Description: Call Reference for incoming call

6.1.3 Return Value

Type: `CelfMpStatus`
Description: `celf_mp_ps_connect_rsp ()` shall return one of the following values :
 CELF_MP_STATUS_OK: Successful completion
 CELF_MP_STATUS_APP_ID_ERR: Invalid Application ID
 CELF_MP_STATUS_CALL_REF_ERR: Invalid Call reference
 CELF_MP_STATUS_ERR: Other unsuccessful completion

6.1.4 Include File

`/usr/include/celf/mp_ps.h`

6.1.5 Functional Description

[This function is an asynchronous service.](#)

This function accepts or rejects the packet communication depending on the parameter `'type'`.
[If the parameter 'type' is incorrect the function shall return the error CELF_MP_STATUS_ERR.](#)

[The application is notified through events of the progress and the completion of the processing, refer to sequence chart in Annex 2.](#)

The start of processing by MPP shall be notified by the following event:
[CELF_MP_PS_IN_START_IND](#)

The completion of this function shall be notified by the following event:
`CELF_MP_PS_SERVICE_OK`

Unsuccessful processing of this function shall be notified by the following event:
`CELF_MP_PS_SERVICE_ERROR`

Deleted: P
 Deleted: "
 Deleted: ".
 Formatted: Normal Indent

Deleted: CELF_MP_PS_RECEPTIO
 N_START_IND

Deleted: 5

7. Request the deactivation of packet switched communication

7.1 Symbol: `celf_mp_ps_call_disconnect`

7.1.1 Syntax

```
CelfMpStatus celf_mp_ps_disconnect (  
    CelfMpAppId app_id,  
    CelfMpCallRef call_ref );
```

7.1.2 Argument

Name: `app_id`
Type: `CelfMpAppId`
I/O: |
Description: Application identifier.

Name: `call_ref`
Type: `CelfMpCallRef`
I/O: |
Description: Call Reference of the packet switched call to be disconnected

7.1.3 Return Value

Type: `CelfMpStatus`
Description: `celf_mp_ps_disconnect ()` shall return one of the following values :
CELFP_MP_STATUS_OK: Successful completion
CELFP_MP_STATUS_APP_ID_ERR: Invalid Application ID
CELFP_MP_STATUS_CALL_REF_ERR: Invalid Call reference
CELFP_MP_STATUS_ERR: Other unsuccessful completion

7.1.4 Include File

`/usr/include/celf/mp_ps.h`

7.1.5 Functional Description

[This function is an asynchronous service.](#)

This function disconnects a packet switched communication.

[The application is notified through events of the progress and the completion of the processing.](#)

The start of processing by MPP shall be notified by the following event:
CELFP_MP_PS_DISCONNECT_REQ

The completion of this function shall be notified by the following event:
CELFP_MP_PS_SERVICE_OK

Unsuccessful processing of this function shall be notified by the following event:
CELFP_MP_PS_SERVICE_ERROR

8. Specify APN settings

8.1 Symbol: celf_mp_ps_apn_set

8.1.1 Syntax

```
CelfMpStatus celf_mp_ps_apn_set (
    CelfMpAppld app_id,
    CelfMpPsApnHostData * apn_data);
```

Deleted: CelfMpPsApnId apn_id, ¶
 CelfMpPsApn * Apn, ¶
 CelfMpPsHost * Host, ¶
 CelfMpPsTitle * Title

8.1.2 Argument

Name: app_id
Type: CelfMpAppld
I/O: I
Description: Application identifier.

Name: apn_data
Type: CelfMpPsApnHostData *
I/O: I
Description: APN data where apn_id speicifes the user APN to set.

Deleted: apn_id
 Deleted: CelfMpPsApnId
 Deleted: User APN to set:

- CELF_MP_PS_APN_USERSET1: User-specified 1
- CELF_MP_PS_APN_USERSET2: User-specified 2
- CELF_MP_PS_APN_USERSET3: User-specified 3
- CELF_MP_PS_APN_USERSET4: User-specified 4
- CELF_MP_PS_APN_USERSET5: User-specified 5
- CELF_MP_PS_APN_USERSET6: User-specified 6
- CELF_MP_PS_APN_USERSET7: User-specified 7
- CELF_MP_PS_APN_USERSET8: User-specified 8
- CELF_MP_PS_APN_USERSET9: User-specified 9
- CELF_MP_PS_APN_USERSET10: User-specified 10

8.1.3 Return Value

Type: CelfMpStatus
Description: celf_mp_ps_apn_set () shall return one of the following values :
 CELF_MP_STATUS_OK: Successful completion
 CELF_MP_STATUS_APP_ID_ERR: Invalid Application ID
 CELF_MP_STATUS_ERR: Other unsuccessful completion

Deleted: **Name:** Host¶
Type: CelfMpPsHost *¶
I/O: I¶
Description: Host data.¶
 ¶
Name: Title¶
Type: CelfMpPsTitle *¶
I/O: I¶
Description: Title data.¶
 ¶

8.1.4 Include File

/usr/include/celf/mp_ps.h

Formatted: Bullets and Numbering

8.1.5 Functional Description

This function is a synchronous service.
 This function allows the modification of the APN, host and title data of one of the 10 user-specified APNs.
If the values in parameter 'apn_data' are incorrect, the function shall return the error CELF_MP_STATUS_ERR.

Deleted: Host
 Deleted: Title

Deleted: 5

9. Get APN settings

9.1 Symbol: `celf_mp_ps_apn_get`

9.1.1 Syntax

```
CelfMpStatus celf_mp_ps_apn_get (  
    CelfMpAppId app_id,  
    CelfMpPsApnHostData * apn_data );
```

9.1.2 Argument

Name: `app_id`
Type: `CelfMpAppId`
I/O: I
Description: Application identifier.

Name: `apn_data`
Type: `CelfMpPsApnHostData`
I/O: O
Description: APN/host data structure

9.1.3 Return Value

Type: `CelfMpStatus`

Description: `celf_mp_ps_apn_get ()` shall return one of the following values :
CEL_F_MP_STATUS_OK: Successful completion
CEL_F_MP_STATUS_APP_ID_ERR: Invalid Application ID
CEL_F_MP_STATUS_ERR: Other unsuccessful completion

9.1.4 Include File

`/usr/include/celf/mp_ps.h`

9.1.5 Functional Description

[This function is a synchronous service.](#)

This function returns the current APN data, host data and title data.

10. Select APN for packet switched communication

10.1 Symbol: `celf_mp_ps_apn_select`

10.1.1 Syntax

```
CelfMpStatus celf_mp_ps_apn_select (
    CelfMpAppld app_id,
    CelfMpPsApnId apn_id );
```

10.1.2 Argument

Name: `app_id`
Type: `CelfMpAppld`
I/O: I
Description: Application identifier.

Name: `apn_id`
Type: `CelfMpPsApnId`
I/O: I

Description: [APN setting](#) to be used

- CELFP_MP_PS_APN_DEFAULT: Default setting
- CELFP_MP_PS_APN_USERSET1: User-specified 1
- CELFP_MP_PS_APN_USERSET2: User-specified 2
- CELFP_MP_PS_APN_USERSET3: User-specified 3
- CELFP_MP_PS_APN_USERSET4: User-specified 4
- CELFP_MP_PS_APN_USERSET5: User-specified 5
- CELFP_MP_PS_APN_USERSET6: User-specified 6
- CELFP_MP_PS_APN_USERSET7: User-specified 7
- CELFP_MP_PS_APN_USERSET8: User-specified 8
- CELFP_MP_PS_APN_USERSET9: User-specified 9
- CELFP_MP_PS_APN_USERSET10: User-specified 10

Deleted: Destination

Deleted: number

10.1.3 Return Value

Type: `CelfMpStatus`

Description: `celf_mp_ps_apn_select ()` shall return one of the following values :

- CELFP_MP_STATUS_OK: Successful completion
- CELFP_MP_STATUS_APP_ID_ERR: Invalid Application ID
- CELFP_MP_STATUS_ERR: Other unsuccessful completion

10.1.4 Include File

`/usr/include/celf/mp_ps.h`

10.1.5 Functional Description

[This function is a synchronous service.](#)

This function [selects](#) the APN [setting](#) to be used for packet switched communication.

[If the parameter 'apn_id' is incorrect, the function shall return the error CELFP_MP_STATUS_ERR.](#)

Deleted: 5

11. Get APN used for packet switched communication

11.1 Symbol: celf_mp_ps_apn_id_get

11.1.1 Syntax

```

CelfMpStatus celf_mp_ps_apn_id_get (
    CelfMpAppId app_id,
    CelfMpPsApnId * apn_id );

```

Deleted: CelfMpPsApnId

11.1.2 Argument

Name: app_id
Type: CelfMpAppId
I/O: I
Description: Application identifier.

Name: apn_id
Type: CelfMpPsApnId
I/O: O
Description: APN id currently used for packet switched communication:

- [CELf_MP_PS_APN_DEFAULT](#): Default setting
- [CELf_MP_PS_APN_USERSET1](#): User-specified 1
- [CELf_MP_PS_APN_USERSET2](#): User-specified 2
- [CELf_MP_PS_APN_USERSET3](#): User-specified 3
- [CELf_MP_PS_APN_USERSET4](#): User-specified 4
- [CELf_MP_PS_APN_USERSET5](#): User-specified 5
- [CELf_MP_PS_APN_USERSET6](#): User-specified 6
- [CELf_MP_PS_APN_USERSET7](#): User-specified 7
- [CELf_MP_PS_APN_USERSET8](#): User-specified 8
- [CELf_MP_PS_APN_USERSET9](#): User-specified 9
- [CELf_MP_PS_APN_USERSET10](#): User-specified 10

11.1.3 Return Value

Type: CelfMpPsApnId
Description: celf_mp_ps_apn_id_get () shall return one of the following values :

- [CELf_MP_STATUS_OK](#): Successful completion
- [CELf_MP_STATUS_APP_ID_ERR](#): Invalid Application ID
- [CELf_MP_STATUS_ERR](#): Other unsuccessful completion

Deleted:
 CELf_MP_PS_APN_DEFAULT : Default setting
 CELf_MP_PS_APN_USERSET1: User-specified 1
 CELf_MP_PS_APN_USERSET2: User-specified 2
 CELf_MP_PS_APN_USERSET3: User-specified 3
 CELf_MP_PS_APN_USERSET4: User-specified 4
 CELf_MP_PS_APN_USERSET5: User-specified 5
 CELf_MP_PS_APN_USERSET6: User-specified 6
 CELf_MP_PS_APN_USERSET7: User-specified 7
 CELf_MP_PS_APN_USERSET8: User-specified 8
 CELf_MP_PS_APN_USERSET9: User-specified 9
 CELf_MP_PS_APN_USERSET10: User-specified 10

11.1.4 Include File

/usr/include/celf/mp_ps.h

11.1.5 Functional Description

[This function is a synchronous service.](#)
 This function returns the APN being used for packet switched communication.

Deleted: 5

12. Force deactivation of a packet communication

12.1 Symbol: `celf_mp_ps_force_disconnect`

12.1.1 Syntax

```
CelfMpStatus celf_mp_ps_force_disconnect (  
    CelfMpAppId app_id,  
    CelfMpCallRef call_ref );
```

12.1.2 Argument

Name: `app_id`
Type: `CelfMpAppId`
I/O: I
Description: Application identifier.

Name: `call_ref`
Type: `CelfMpCallRef`
I/O: I
Description: Packet switched call reference to be disconnected forcibly.

12.1.3 Return Value

Type: `CelfMpStatus`

Description: `celf_mp_ps_force_disconnect ()` shall return one of the following values :
CELFP_MP_STATUS_OK: Successful completion
CELFP_MP_STATUS_APP_ID_ERR: Invalid Application ID
[CELFP_MP_STATUS_CALL_REF_ERR: Invalid Call reference](#)
CELFP_MP_STATUS_ERR: Other unsuccessful completion

12.1.4 Include File

`/usr/include/celf/mp_ps.h`

12.1.5 Functional Description

[This function is an asynchronous service.](#)

This function disconnects a packet communication forcibly.

[The application is notified through events of the completion of the processing.](#)

The completion of this function shall be notified by the following event:
CELFP_MP_PS_DEACTIVATE_IND

Unsuccessful processing of this function shall be notified by the following event:
CELFP_MP_PS_SERVICE_ERROR

13. Get User Plane connection status

13.1 Symbol: `celf_mp_ps_uplane_status_get`

13.1.1 Syntax

```
CelfMpStatus celf_mp_ps_uplane_status_get (  
    CelfMpAppId app_id  
    CelfMpPsUPlane \* status );
```

Deleted: CelfMpPsUPlane

13.1.2 Argument

Name: `app_id`
Type: `CelfMpAppId`
I/O: `I`

Description: Application identifier.

Name: `status`

Type: `CelfMpPsUPlane`

I/O: `O`

Description: U-Plane connection status:

`CELF_MP_PS_UPLANE_ON`: U-Plane connected

`CELF_MP_PS_UPLANE_OFF`: U-Plane not connected

13.1.3 Return Value

Type: `CelfMpStatus`

Description: `celf_mp_ps_uplane_status_get ()` shall return one of the following values :

`CELF_MP_STATUS_OK`: Successful completion

`CELF_MP_STATUS_APP_ID_ERR`: Invalid Application ID

`CELF_MP_STATUS_ERR`: Other unsuccessful completion

Deleted: CelfMpPsUPlane

13.1.4 Include File

`/usr/include/celf/mp_ps.h`

Deleted: `CELF_MP_PS_UPLANE_ON`: U-Plane connected
Deleted: `CELF_MP_PS_UPLANE_OFF`: U-Plane not connected

13.1.5 Functional Description

This function is a synchronous service.

This function gets the current U-Plane connection status.

Deleted: 5

14. Get DNS record name

14.1 Symbol: celf_mp_ps_dns_record_get

14.1.1 Syntax

```
CelfMpStatus celf_mp_ps_dns_record_get (  
    CelfMpAppld app_id,  
    CelfMpPsDnsRec *dns_record );
```

Deleted: DNS

Deleted: R

14.1.2 Argument

Name: app_id
Type: CelfMpAppld
I/O: I
Description: Application identifier.

Name: [dns_record](#)
Type: CelfMpPsDnsRec *
I/O: O
Description: DNS record name.

Deleted: DNS

Deleted: Record

14.1.3 Return Value

Type: CelfMpStatus

Description: celf_mp_ps_dns_record_get () shall return one of the following values :
CELf_MP_STATUS_OK: Successful completion
CELf_MP_STATUS_APP_ID_ERR: Invalid Application ID
CELf_MP_STATUS_ERR: Other unsuccessful completion

14.1.4 Include File

/usr/include/celf/mp_ps.h

14.1.5 Functional Description

[This function is a synchronous service.](#)

This function retrieves the name of the DNS for the [APN](#) currently being used.

Deleted: destination

Deleted: 5

15. Get default APN mode

15.1 Symbol: `celf_mp_ps_apn_mode_get`

15.1.1 Syntax

```
CelfMpStatus celf_mp_ps_apn_mode_get (  
    CelfMpAppId app\_id,  
    CelfMpPsApnMode * apn\_mode );
```

Deleted: CelfMpPsApnMode

15.1.2 Argument

Name: `app_id`
Type: `CelfMpAppId`
I/O: I
Description: Application identifier.

Name: `apn_mode`
Type: `CelfMpPsApnMode`
I/O: O

Description: U-Plane connection status:
[CELf_MP_PS_DEFAULT_APN_MS](#): Settings in the mobile phone
[CELf_MP_PS_DEFAULT_APN_UIM](#): Settings in the UIM

15.1.3 Return Value

Type: [CelfMpStatus](#)
Description: `celf_mp_ps_apn_mode_get ()` shall return one of the following values :
[CELf_MP_STATUS_OK](#): Successful completion
[CELf_MP_STATUS_APP_ID_ERR](#): Invalid Application ID
[CELf_MP_STATUS_ERR](#): Other unsuccessful completion

Deleted: CelfMpPsApnMode

15.1.4 Include File

`/usr/include/celf/mp_ps.h`

Deleted: [CELf_MP_PS_DEFAULT_APN_MS](#): Settings in the mobile phone
[CELf_MP_PS_DEFAULT_APN_UIM](#): Settings in the UIM

15.1.5 Functional Description

[This function is a synchronous service.](#)

This function gets the type of default APN settings. The default APN could be set to UIM or to Mobile phone.

Deleted: 5

16. Force deactivation of all packet switched communications

16.1 Symbol: `celf_mp_ps_service_shutdown`

16.1.1 Syntax

```
CelfMpStatus celf_mp_ps_service_shutdown (  
    CelfMpAppld app_id);
```

16.1.2 Argument

Name: `app_id`
Type: `CelfMpAppld`
I/O: I

Description: Application identifier.

16.1.3 Return Value

Type: `CelfMpStatus`

Description: `celf_mp_ps_service_shutdown ()` shall return one of the following values :

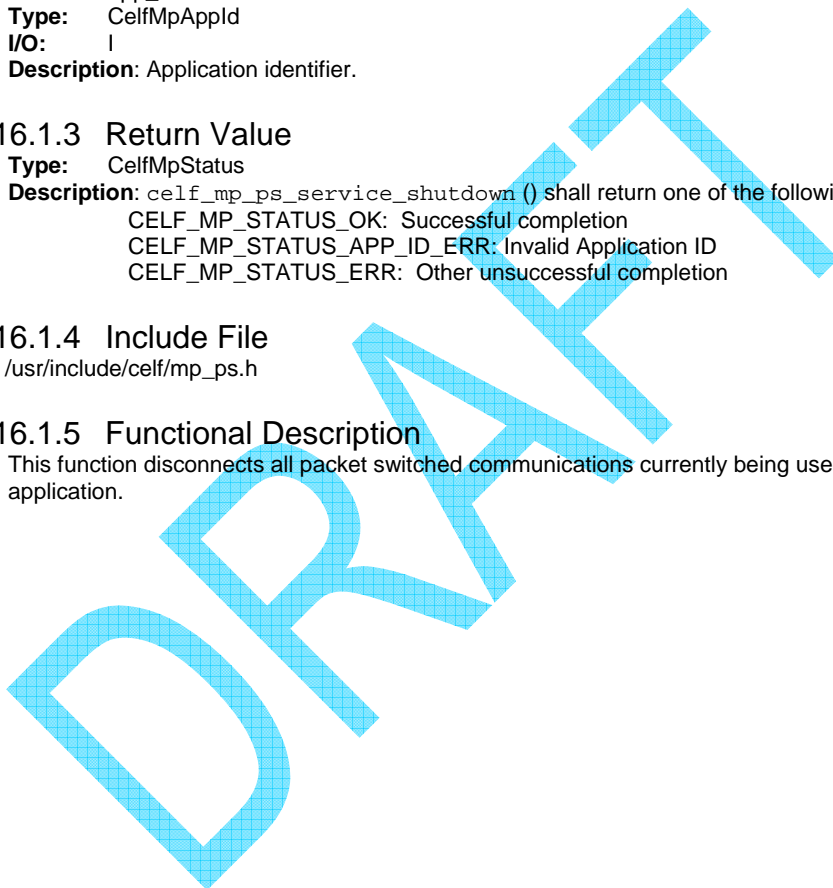
`CELf_MP_STATUS_OK`: Successful completion
`CELf_MP_STATUS_APP_ID_ERR`: Invalid Application ID
`CELf_MP_STATUS_ERR`: Other unsuccessful completion

16.1.4 Include File

`/usr/include/celf/mp_ps.h`

16.1.5 Functional Description

This function disconnects all packet switched communications currently being used by the application.



17. Request APN initialization

17.1 Symbol: celf_mp_ps_apn_initialize

17.1.1 Syntax

```

CelfMpStatus celf_mp_ps_apn_initialize (
    CelfMpAppId app_id,
    CelfMpPsApnInit * result );

```

Deleted: CelfMpPsApnInit

17.1.2 Argument

Name: app_id
Type: CelfMpAppId
I/O: I
Description: Application identifier.

Name: result
Type: CelfMpPsApnInit *
I/O: O

Description: Result of the APN initialization:
[CELf_MP_PS_UIM_UPDATED: Successful, UIM updated](#)
[CELf_MP_PS_UIM_NOT_UPDATED: Successful, UIM not updated](#)
[CELf_MP_PS_AUTH_ERR: Failure returned from the authentication service](#)

17.1.3 Return Value

Type: [CelfMpStatus](#)

Description: celf_mp_ps_apn_initialize () shall return one of the following values :

[CELf_MP_STATUS_OK: Successful completion](#)
[CELf_MP_STATUS_APP_ID_ERR: Invalid Application ID](#)
[CELf_MP_STATUS_ERR: Other unsuccessful completion](#)

Deleted: CelfMpPsApnInit

Deleted: ¶

17.1.4 Include File

/usr/include/celf/mp_ps.h

Deleted: CELf_MP_PS_UIM_UPDA
 TED: Successful, UIM updated
 CELf_MP_PS_UIM_NOT_UPDATE
 D: Successful, UIM not updated
 CELf_MP_PS_AUTH_ERR : Failure
 returned from the authentication
 service

17.1.5 Functional Description

This function is an asynchronous service.

This function initializes APN, this initialized APN is called default APN.

When the power is turned on, this function starts APN initialization according to a request from an authentication application which initializes APN according to the process below:

(case1) When the APN information in the UIM is not the same as the APN information requested by the authentication application,

the APN information requested by the authentication application is stored in the UIM or in the mobile phone.

(case2) When the APN information in UIM is same as the APN information requested by authentication application,

the information in the UIM is not changed.

(case3) In case of an error such as failure of reading the UIM information,

the APN information requested by the authentication application is set in the mobile phone.

The APN initialization completion is notified as an event

CELf_MP_PS_EXT_EVENT_APN_INIT_END

Additional information to it is used to post the [APN](#) used.

Deleted: destination number

Deleted: 5

18. Start monitoring external equipment for packet switched communication

18.1 Symbol: celf_mp_ps_ext_device_notification_start

18.1.1 Syntax

```
CelfMpStatus celf_mp_ps_ext_device_notification_start (
|   CelfMpAppId      app_id,
|   CelfMpPsExtEventSet mask,
|   CelfMpCallback   callback_func);
```

18.1.2 Argument

Name: app_id
Type: CelfMpAppId
I/O: I
Description: Application identifier.

Name: mask
Type: CelfMpPsExtEventSet
I/O: I
Description: Set of external notification events.
 Enabled with the bit turned ON
 CELF_MP_PS_EXT_EVENT_APN_INIT_END : Notification of APN initialization completed
 CELF_MP_PS_EXT_EVENT_CLASS_ALL : All

Name: callback_func
Type: CelfMpCallback
I/O: I
Description: Callback function used to notify the event.

18.1.3 Return Value

Type: CelfMpStatus
Description: celf_mp_ps_ext_device_notification_start () shall return one of the following values :
 CELF_MP_STATUS_OK: Successful completion
 CELF_MP_STATUS_APP_ID_ERR: Invalid Application ID
 CELF_MP_STATUS_EVENT_SET_ERR: The set of event is invalid
 CELF_MP_STATUS_ERR: Other unsuccessful completion

18.1.4 Include File

/usr/include/celf/mp_ps.h

18.1.5 Functional Description

[This function is a synchronous service.](#)

This function start sending event notification regarding the external equipment i.e. external TE for packet communication.

Applications may be notified of the following events:

- APN initialization completed: Notifies the APN initialization completed.

Deleted: and the destination number to be used

Deleted: 5

19. Stop monitoring external equipment for packet switched communication

19.1 Symbol: `celf_mp_ps_ext_device_notification_stop`

19.1.1 Syntax

```
CelfMpStatus celf_mp_ps_ext_device_notification_stop (
    CelfMpAppld app_id,
    CelfMpPsExtEventSet mask );
```

19.1.2 Argument

Name: `app_id`
Type: `CelfMpAppld`
I/O: I
Description: Application identifier.

Name: `mask`
Type: `CelfMpPsExtEventSet`
I/O: I
Description: Set of external notification events.
 Stops the notification when the bit is set
`CELF_MP_PS_EXT_EVENT_APN_INIT_END` : Notification of APN initialization completed
`CELF_MP_PS_EXT_EVENT_CLASS_ALL` : All

19.1.3 Return Value

Type: `CelfMpStatus`
Description: `celf_mp_ps_ext_device_notification_stop ()` shall return one of the following values :
`CELF_MP_STATUS_OK`: Successful completion
`CELF_MP_STATUS_APP_ID_ERR`: Invalid Application ID
`CELF_MP_STATUS_EVENT_SET_ERR`: The set of event is invalid
`CELF_MP_STATUS_ERR`: Other unsuccessful completion

19.1.4 Include File

`/usr/include/celf/mp_ps.h`

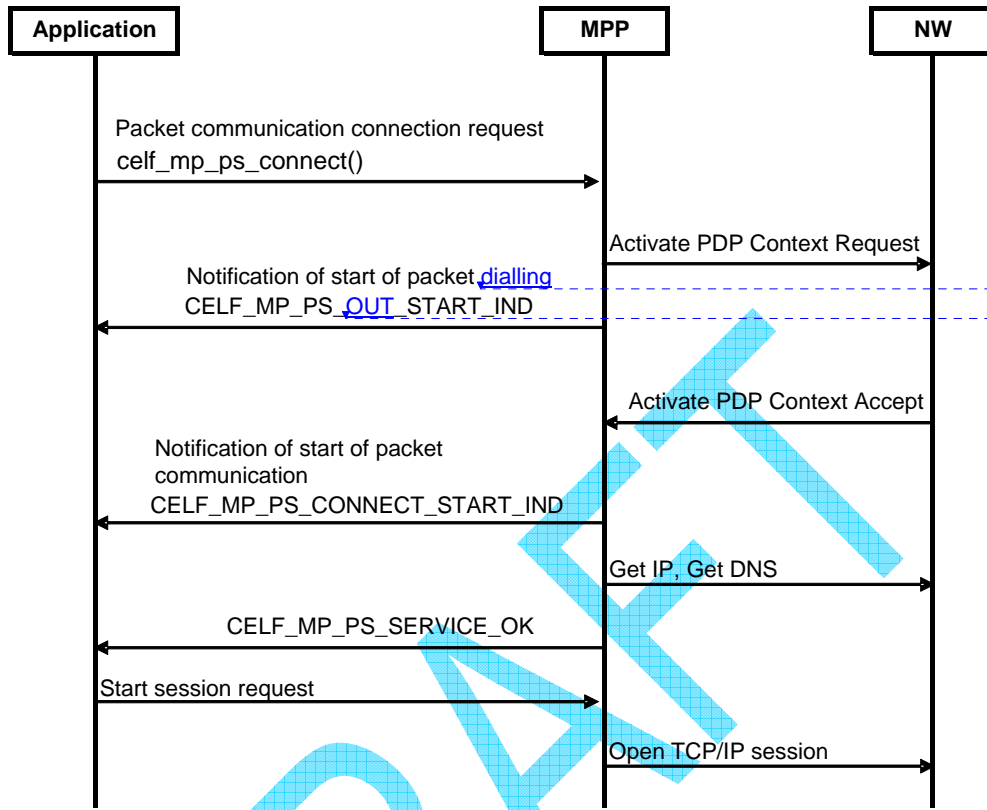
19.1.5 Functional Description

[This function is a synchronous service.](#)
 This function stops sending event notification for the events specified in [celf_mp_ps_ext_device_notification_start](#).

Deleted: Symbol:
`celf_mp_ps_ext_device_notification_start`
Formatted: Normal
Formatted: Heading 1

Deleted: 5

20. Annex 1 - PS outgoing connection



Formatted: Normal

Deleted: dialing

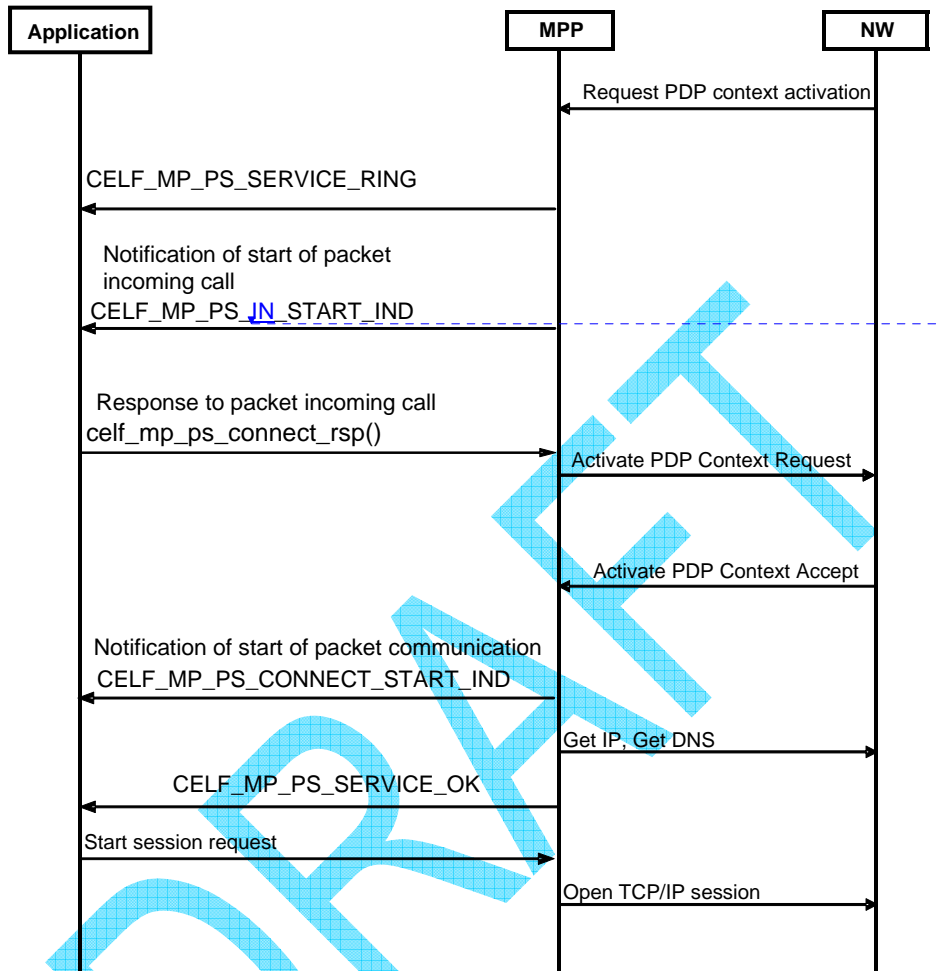
Deleted: EMISSION

Formatted: Heading 1

DRAFT

Deleted: 5

21. Annex 2 – PS incoming connection



Formatted: Normal

Deleted: RECEPTION

Formatted: Heading 1

Deleted: 5

22. Annex 3 – Packet switched communication status and events

