



CE Linux Forum

Status of Embedded Linux BoF October, 2009

Tim Bird

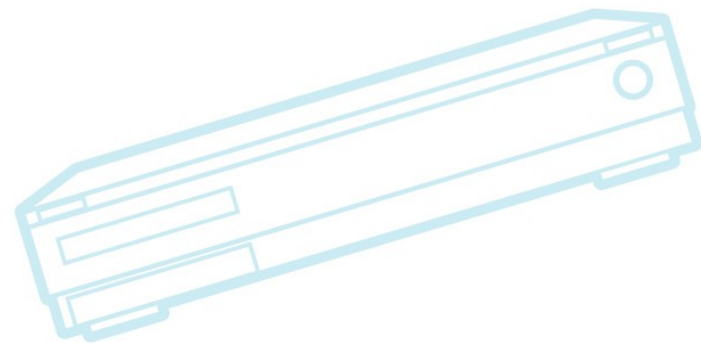
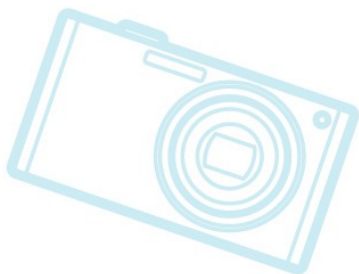
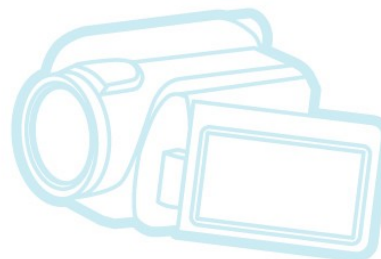
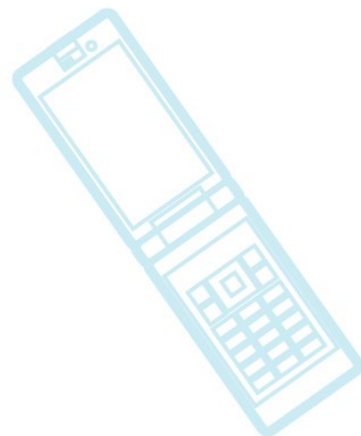
CELF Architecture Group Chair



CE Linux Forum

Outline

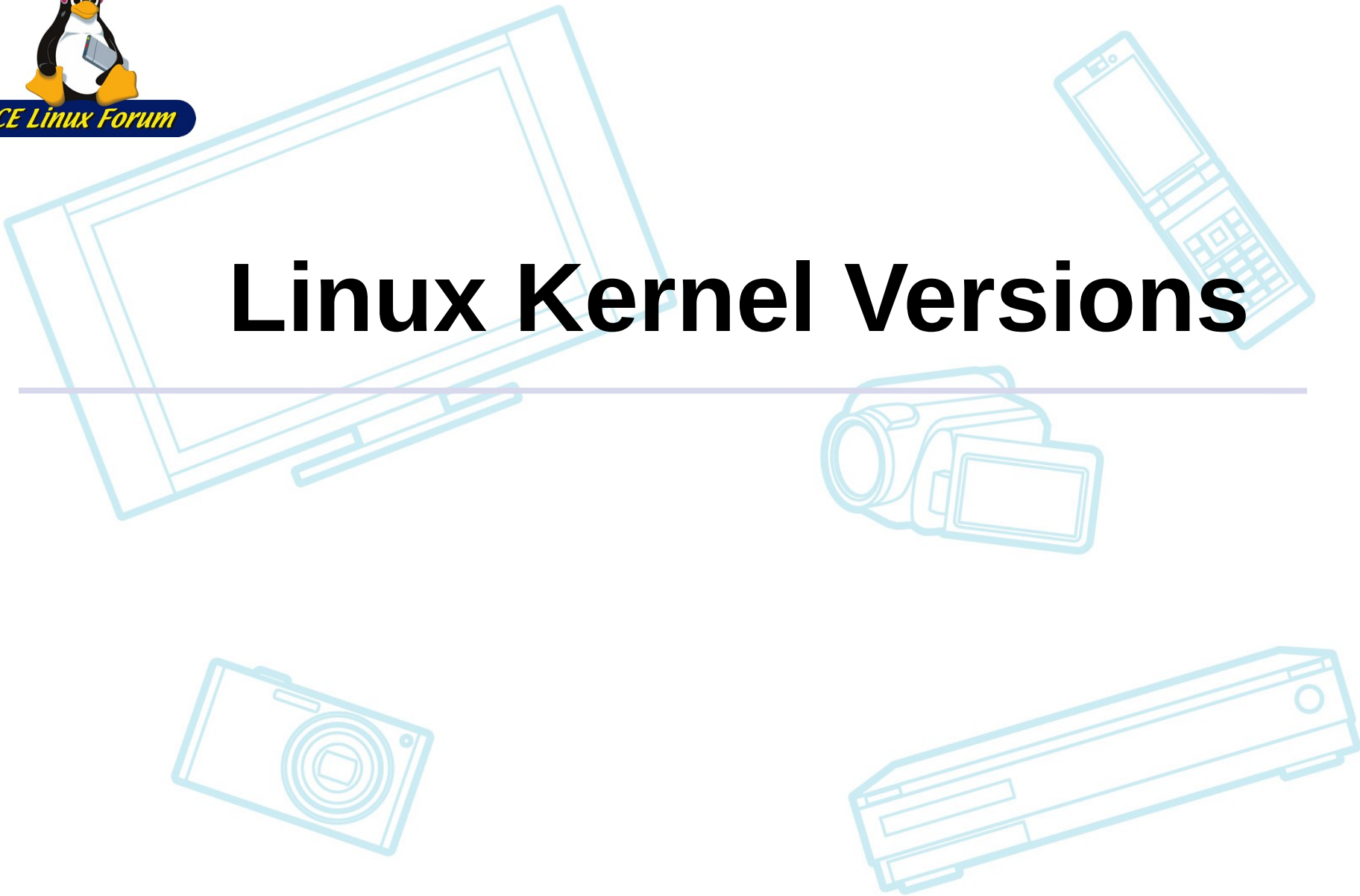
- Kernel Versions
- Technology Areas
- Embedded Distributions
- Community
- Resources





CE Linux Forum

Linux Kernel Versions

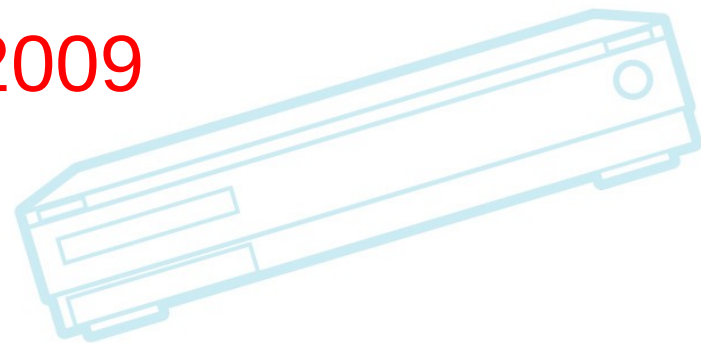
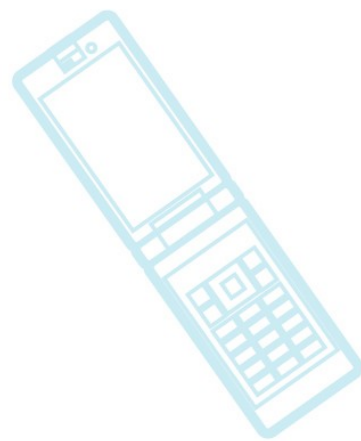




CE Linux Forum

Kernel Versions

- Linux v2.6.27 – 9 Oct 2008
- Linux v2.6.28 – 24 Dec 2008
- Linux v2.6.29 – 23 Mar 2009
- Linux v2.6.30 – 10 June 2009
- Linux v2.6.31 – 9 Sep 2009
- **Linux v2.6.32-rc5 - 16 Oct 2009**

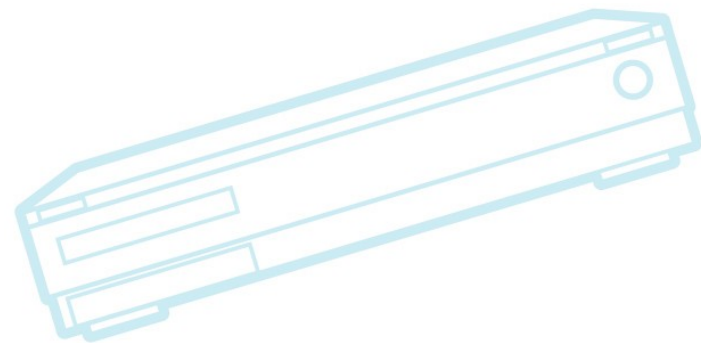
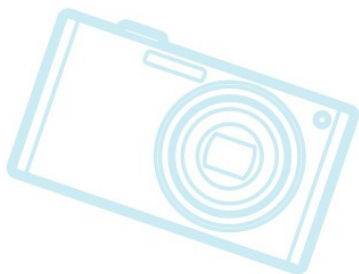
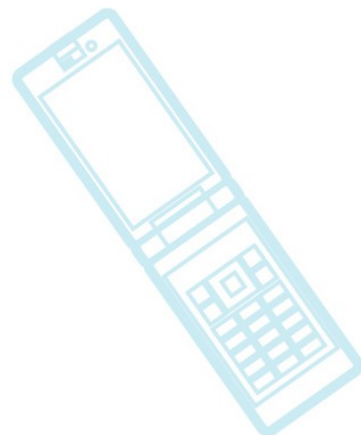




CE Linux Forum

Linux v2.6.29

- SquashFS
- BTRFS
- Asynchronous Function Calls

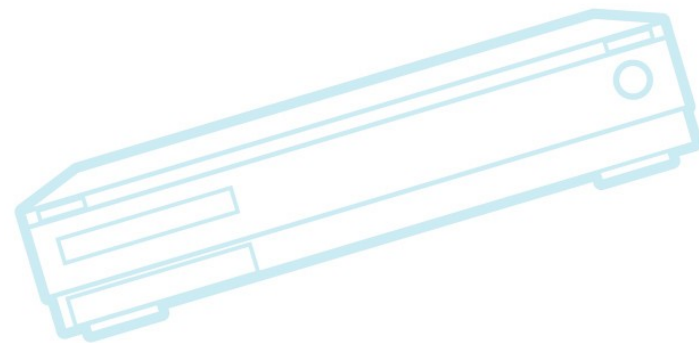
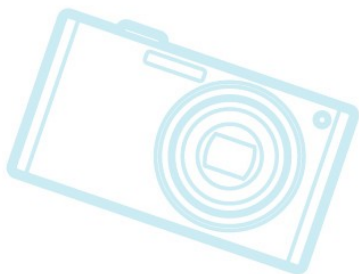
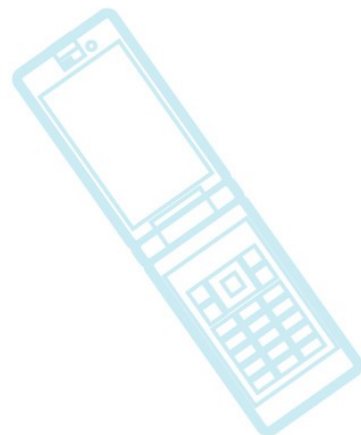




CE Linux Forum

Linux v2.6.30

- TOMOYO security module
 - <http://lwn.net/Articles/277833/>
- Threaded interrupts
 - <http://lwn.net/Articles/302043/>





CE Linux Forum

Linux v2.6.31

- Ftrace features
 - Generic filters, function profiler, new tracepoints, new documentation
- SMACK security module logging
- Performance counters
 - <http://lwn.net/Articles/311850/>
- kmemleak - detect kernel memory leaks
 - <http://lwn.net/Articles/187979/>



CE Linux Forum

Linux v.2.6.32-rc5 (pre-32)

- devtmpfs
 - Dynamic, fast population of /dev
 - Very good for embedded!
 - <http://lwn.net/Articles/331818/>
- New scheduler tracepoints
- Timechart tool
 - New tool to create SVG chart of kernel events
 - See <http://blog.fenrus.org/?p=5>
- New info in /proc/meminfo
 - Good for finding OOM problems



Patches to watch

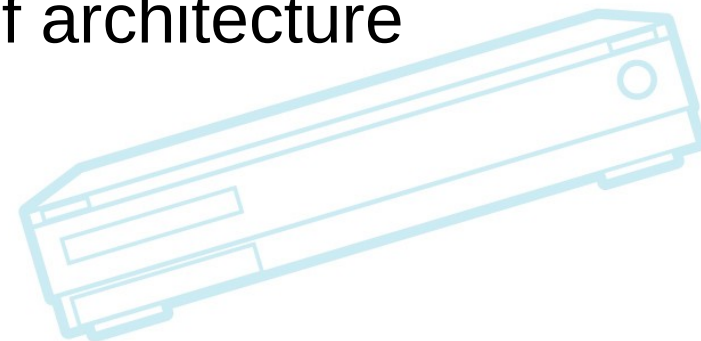
- kbuild: kconfig CROSS_COMPILE option
 - Puts ARCH and CROSS_COMPILE into files in build directory
 - Makes it easier when building for multiple architectures
- Speed up symbol resolution during module loading
 - Sorts symbol table and avoid linear lookup cost per symbol when loading a module
 - Developer, Alan Jenkins, reports saving 20% of time on coldboot
 - Depends on modules being loaded



CE Linux Forum

Patches to watch (cont.)

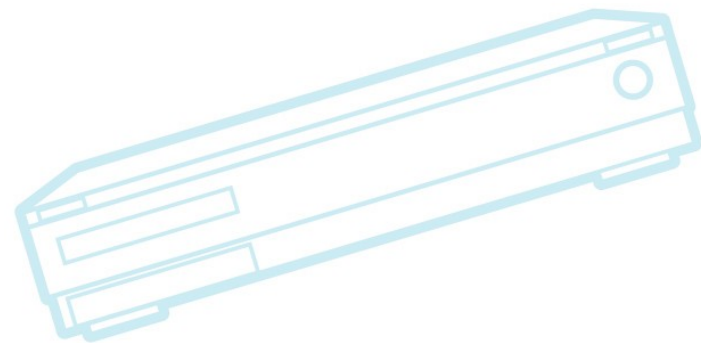
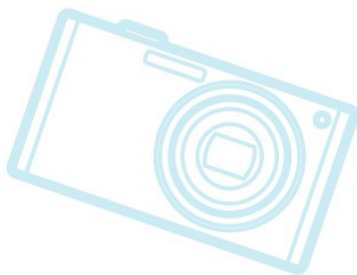
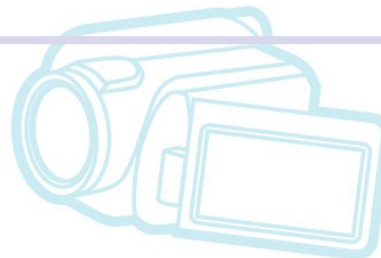
- **CONFIG_PRINTK_VERBOSE**
 - Allows compiling out printk messages below a certain printk level
- **Generic clock frameworks**
- **Generic-asm**
 - Simplifications and cleanup of architecture support





CE Linux Forum

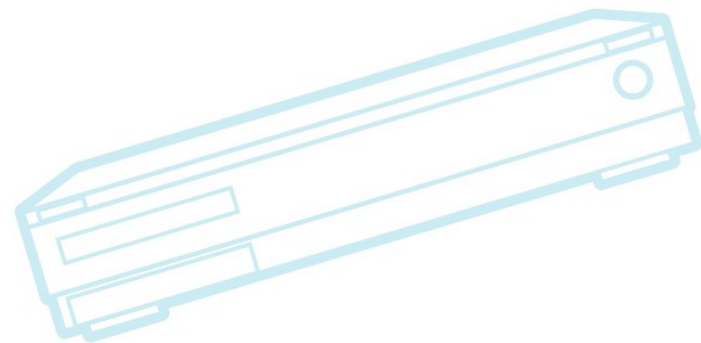
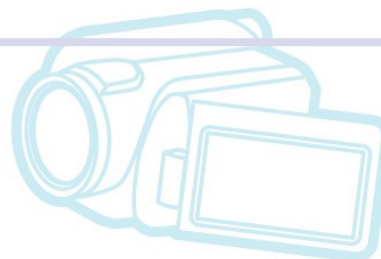
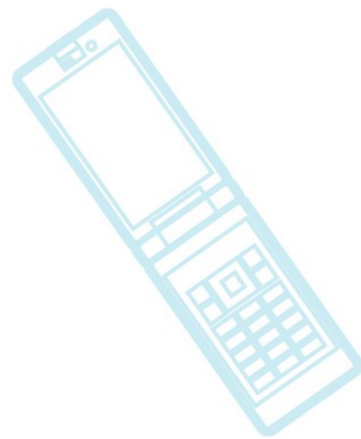
Technology Areas





Technology Areas

- Bootup Time
- File Systems
- Power Management
- Real-time
- Security
- System Size
- Tracing





CE Linux Forum

Bootup Time

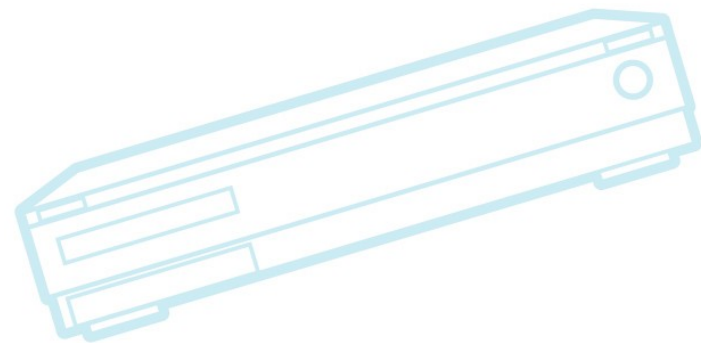
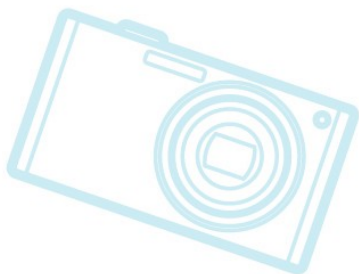
- Bootup time is now a hot topic (due to netbooks)
- Intel 5-second boot on Moblin
 - See <http://lwn.net/Articles/299483>
- Asynchronous function calls
 - Mainlined in 2.6.29
 - See <http://lwn.net/Articles/314808>
- *scripts/bootgraph.pl* for visualization of initcalls
- New Readahead techniques
- Aggressive application optimizations (especially for X)



CE Linux Forum

Bootup Time patches

- devtmpfs
 - A form of devfs again (oh no!)
 - 0.6 second faster boot-time on desktops
 - who uses dynamic device nodes on startup in embedded?

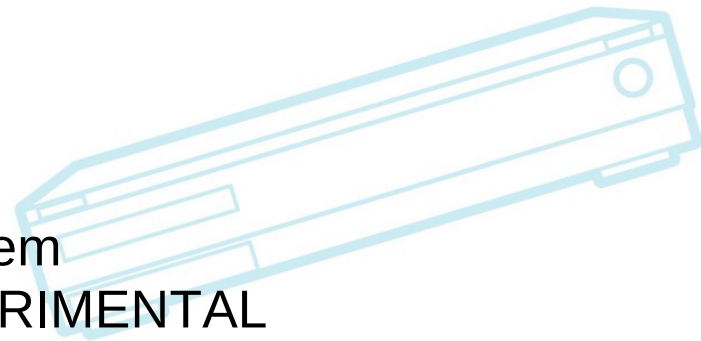
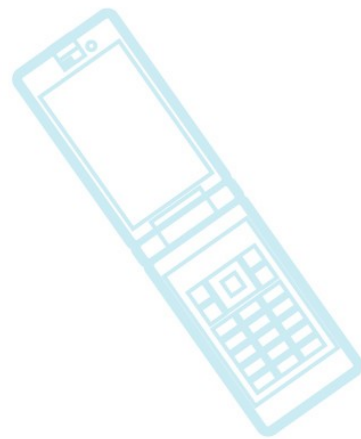




CE Linux Forum

File Systems

- SquashFS
 - Compressed, read-only FS
 - Mainlined in 2.6.29
 - Was out-of-tree for years
 - CELF contracted author to mainline it
 - <http://www.linux-mag.com/cache/7357/1.html>
 - LZMA support being added right now
- UBIFS
 - General purpose flash filesystem, built on wear-leveling layer above flash
 - Mainlined in 2.6.27
 - See <http://lwn.net/Articles/276025>
- BTRFS
 - Check-pointing log-structured file system
 - Mainlined in 2.6.29, BUT STILL EXPERIMENTAL
 - See <http://www.linux-mag.com/id/7308>

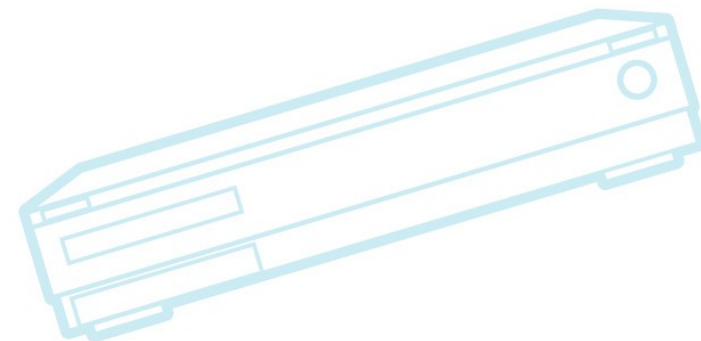
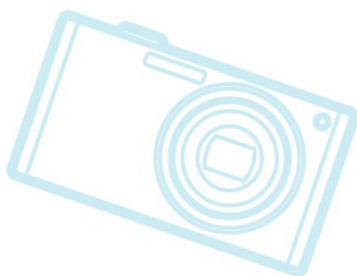
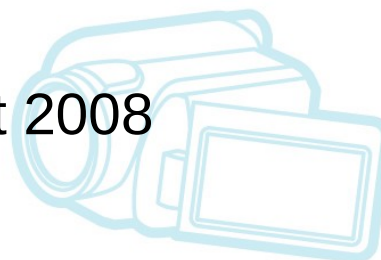
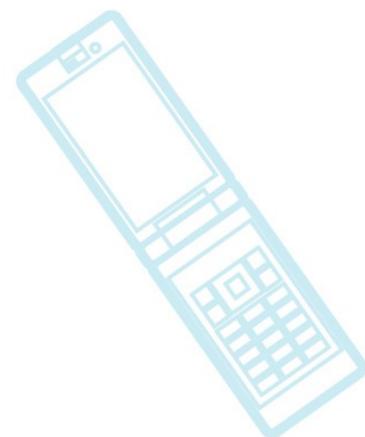




CE Linux Forum

More File Systems

- AXFS
 - Advanced XIP File System
 - Still hanging around
 - Offered to Numonyx customers
 - Last mainline attempt was August 2008
- LogFS
 - Effort seems to have dropped off





CE Linux Forum

File Systems Issues

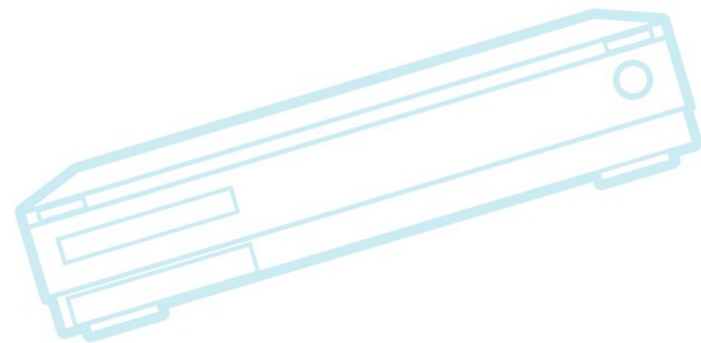
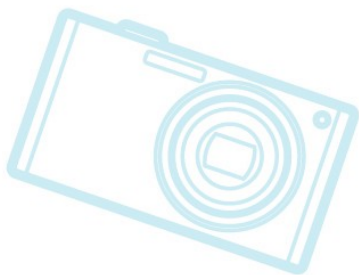
- Patches of interest:
 - VFAT patent workaround
 - 2 attempts by Andrew Tridgell to work around Microsoft VFAT long-name patent
 - First attempt was controversial, because functionality was lost
 - New approach preserves functionality
 - <http://lwn.net/Articles/339641>
 - VFS-based union mounts
 - See <http://lkml.org/lkml/2009/5/18/289>
- Some log-structured file system is needed for fast mounting
 - Possibly NILFS or BRTFS will fill this role



CE Linux Forum

Power Management

- Wakelocks submitted by Google
 - Kernel PM developers rejected the approach
 - But this opened a discussion of the requirements
 - See <http://lwn.net/Articles/318611>
- Lot of interest lately in device suspend

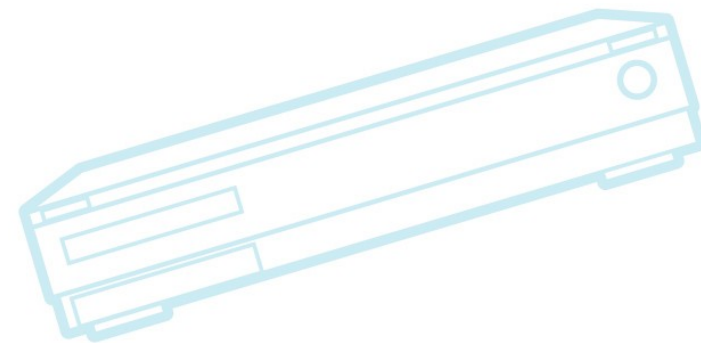
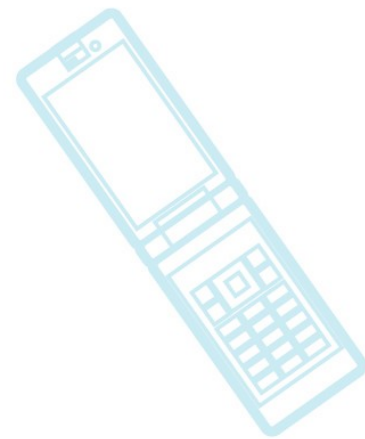




CE Linux Forum

Real-time

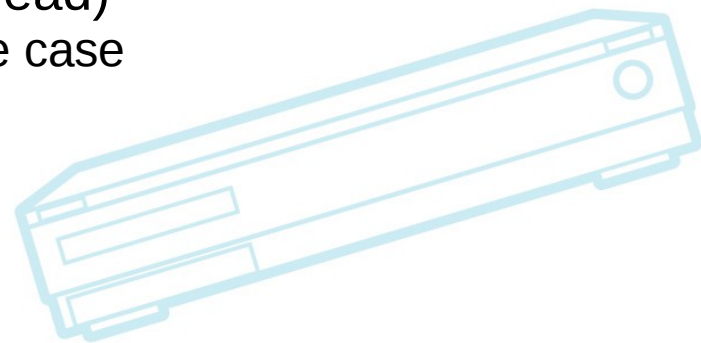
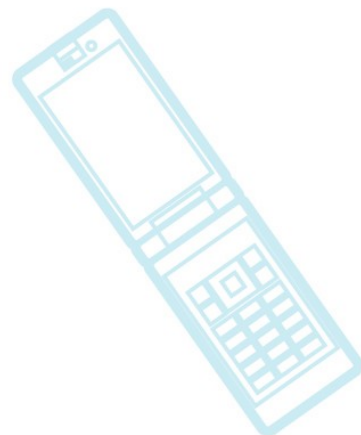
- RT-preempt
 - Interrupt threads - Mainlined 2.6.30
 - Sleeping Spinlocks
 - Thomas Gleixner and Ingo Molnar got busy with other stuff
 - Maybe a push to mainline soon
 - Lots of hard work required to get this in
 - Linux Realtime mini-summit
 - <http://lwn.net/Articles/354690/>
- Xenomai
 - Dual-kernel Real-time kernel
 - Successor to Adeos/I-Pipe
 - See <http://www.xenomai.org/>





Security Modules

- Tomoyo Linux
 - Path-based security module
 - Mainlined in 2.6.30
 - Was a big deal to get a path-based LSM into the kernel
 - See <http://elinux.org/TomoyoLinux>
 - Presentations on using Tomoyo with Android at Japan Technical Jamborees 27 and 28
- Smack
 - Mainlined in 2.6.25 kernel
 - Seems good for embedded (low overhead)
 - CELF started project to evaluate TV use case
 - See <http://lwn.net/Articles/292291>
- Embedded SE Linux
 - Haven't heard much lately

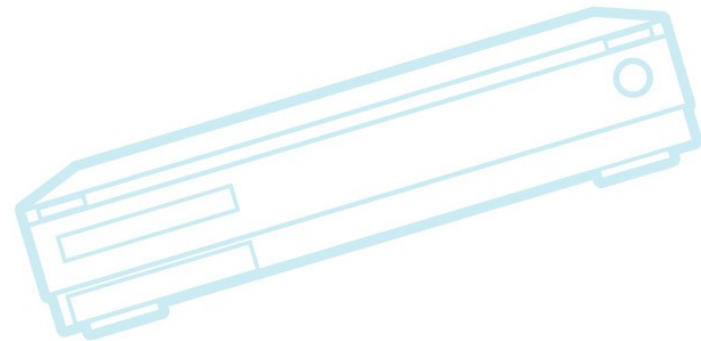
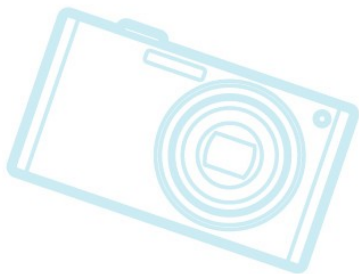




CE Linux Forum

Security – other

- Integrity Measurement
 - Allows kernel to interact with TPM and ensure trusted operation
 - Mainlined in 2.6.30
 - See <http://lwn.net/Articles/137306>
 - Search: “Integrity Measurement Architecture IBM”





System Size / Memory

- Linux-tiny
 - CELF contracted with Free-Electrons
 - 8 patches mainlined in Fall by Thomas Petazzoni
- -ffunction_sections
 - Put each function in it's own linker section
 - Allows elimination of unused code
 - Patches sent last July, but I haven't seen any update since then
- Compression
 - LZMA support
 - Support for LZMA kernel image compression (up to 30% better than gzip)
 - Still would like to see generic LZMA support in kernel (for e.g. SquashFS)
 - See <http://www.squashfs-lzma.org/>
- XIP
 - Not much new development (AXFS?)



System Size / Memory

- Compression
 - LZMA support
 - Support for LZMA kernel image compression (up to 30% better than gzip)
 - Work proceeding on LZMA support for SquashFS
 - LZO kernel image compression
 - Out of mainline, but author may try again soon



CE Linux Forum

smem

- Description:
 - New tool to provide information about system memory usage
 - Reports *Proportional Set Size* (PSS), which accounts better for shared pages, and doesn't lie, like RSS
 - Supports visualization (charts)
- Author: Matt Mackall
- Status:
 - Presented at ELC 2009 – is in good shape
 - See <http://www.selenic.com/smem>



CE Linux Forum

Mem_notify patch

- Addition to cgroup system to support notification on low memory
- Patches not really noticed by community
- Some feedback was addressed, and patch was submitted again
- Work was funded by CELF



CE Linux Forum

Tracing

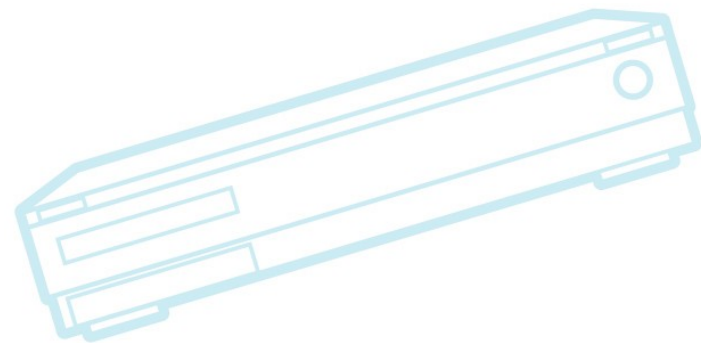
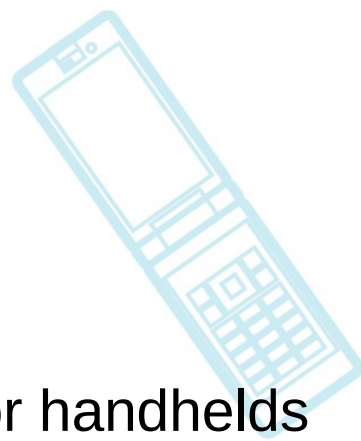
- **Ftrace**
 - See my other talk...
 - http://elinux.org/Ftrace_Function_Graph_ARM
- **SystemTap**
 - SystemTap 1.0 released
 - Now includes support for cross-compilation
 - See <http://lwn.net/Articles/353842/>
- **LTTng**
 - Not sure what's going on...
- **Perf Events (was Perf Counters)**



CE Linux Forum

Audio/Video/Graphics

- GStreamer
 - Is de-facto standard for video management for handhelds
- DirectFB
 - Continued uptake in TV domain
- OpenGL ES
 - De-facto standard for 3D API (/Gaming in embedded?)
- Clutter (GTK UI Framework)





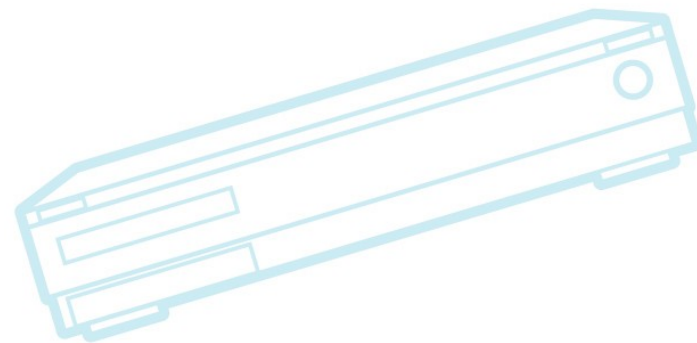
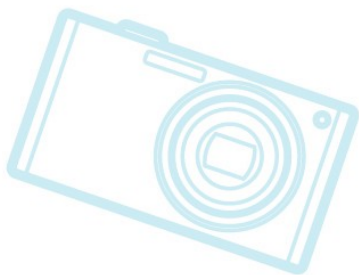
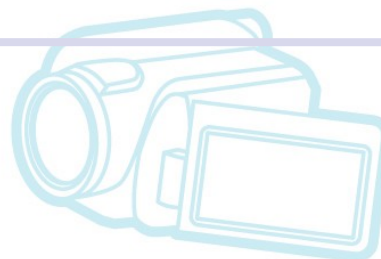
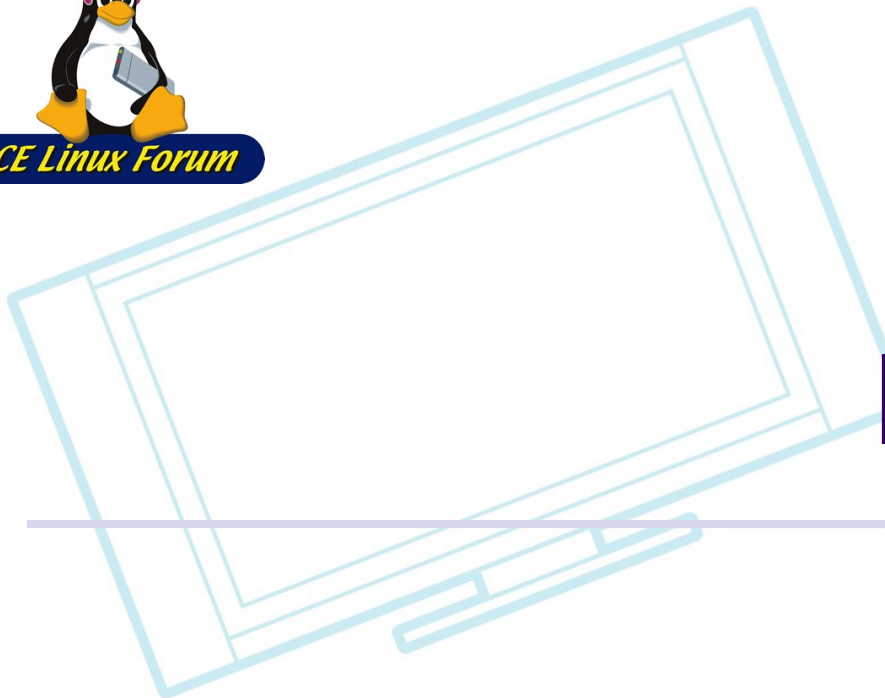
Miscellaneous Stuff

- Device Trees for ARM
 - Device Trees is a mechanism to pass info from bootloader to kernel
 - Supported in X86 and PPC
 - If all platforms supported it, it could allow more uniform device drivers
 - Also, allows for a single binary to run on multiple platforms
 - Is a new hot topic
- Video4linux SoC Camera Framework project



CE Linux Forum

Embedded Distributions





Embedded Distributions

- Moblin
 - Intel transferred control to Linux Foundation
 - Moblin 2.0 released (24 Sep 2009)
 - Lots of netbooks announced at Intel Developer's Forum
 - GENIVI
- Maemo
 - Maemo switch to Qt (not a big surprise)
 - <http://lwn.net/Articles/341391>
- Android – next page



CE Linux Forum

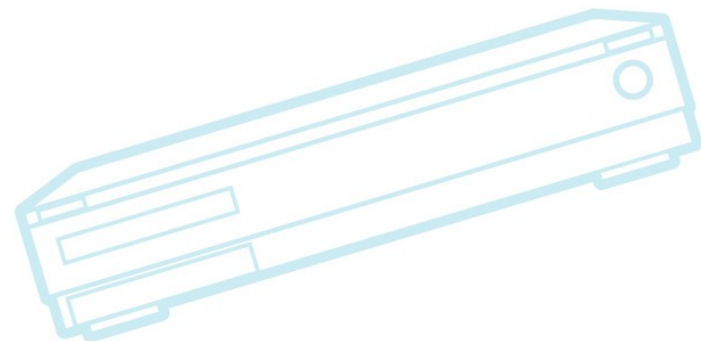
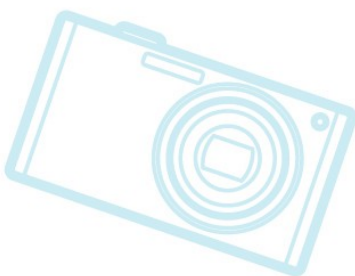
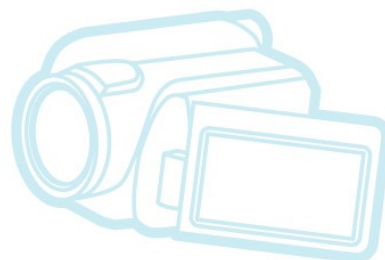
Android

- Android 1.6 SDK (Donut) released (15 Sep 2009)
- Number of devices still increasing
 - Motorola, LG have announced phones
- Non-phones starting to appear
 - Barnes and Noble e-book reader
 - Dell Android MID (??)



CE Linux Forum

Contract Work

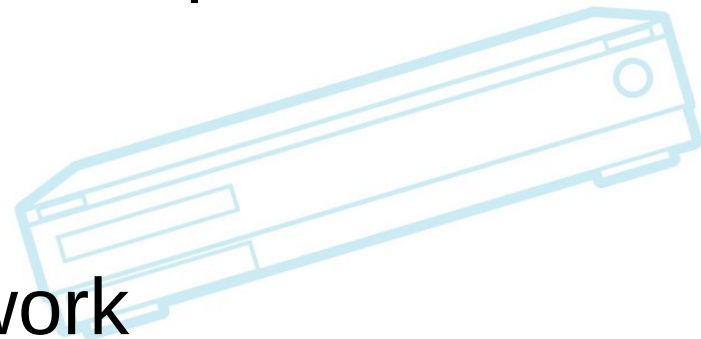
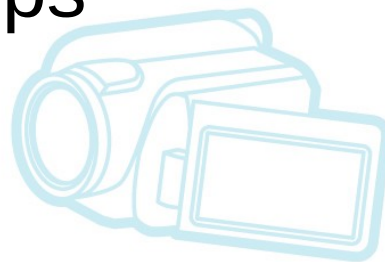
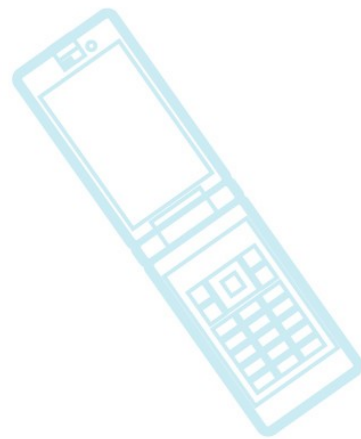




CE Linux Forum

CELF Contract Work

- smem
- OOM notifications in cgroups
- SquashFS enhancements
- SMACK on TV analysis
- Flash filesystem testing and comparison
- DirectFB mainlining
- Device-trees for ARM
- Matt Mackall – maintainer work

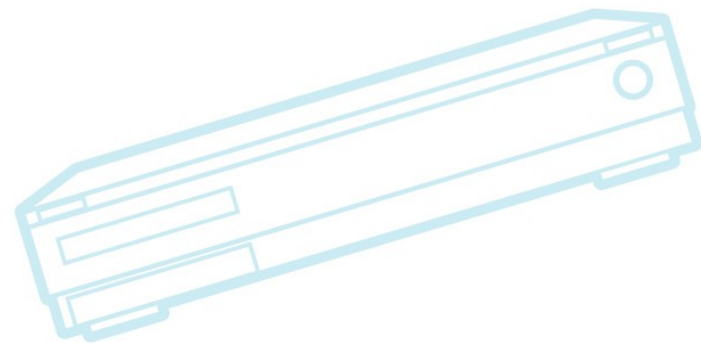
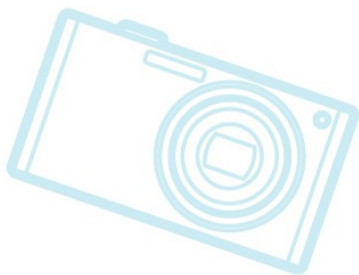




CE Linux Forum



Community

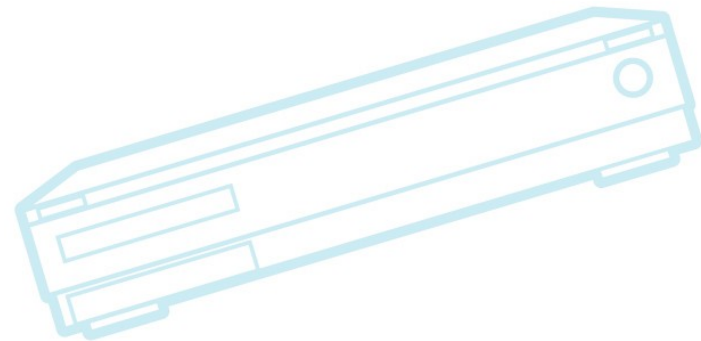




CE Linux Forum

Community

- Need to continue building embedded linux community
 - Please use linux-embedded list
- MELD embedded linux developer portal
 - Supported by Monta Vista
- eLinux wiki

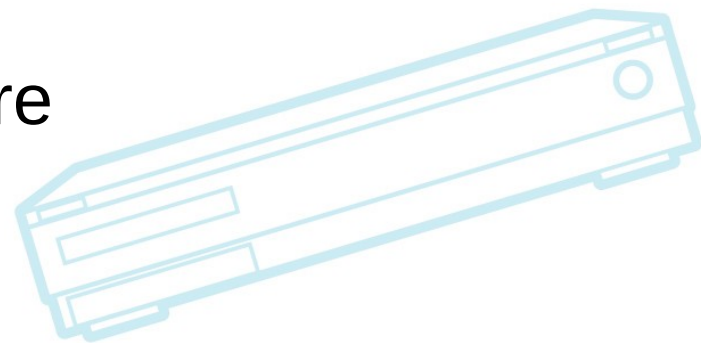
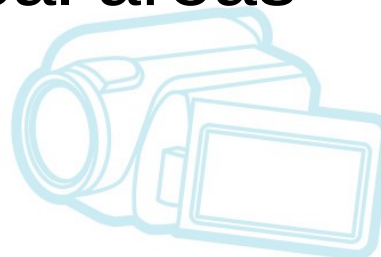
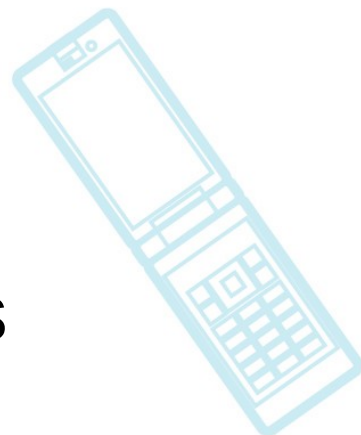




CE Linux Forum

eLinux Wiki

- Site for embedded Linux developers
- Very good for some technical areas
- Stagnant in some areas
- Promotion
 - Contests
 - Elinux.org working BOF at ELC
- Please use it and post stuff there

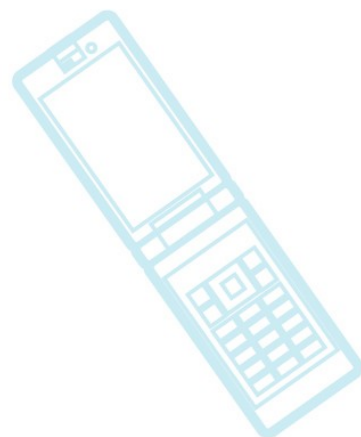




CE Linux Forum

Conferences

- Past
 - ELC 2009
 - ELC Europe 2009
 - Videos should be available soon
- Present – Japan Linux Symposium
- Future
 - ELC 2010 – April 12-14, San Francisco
- See <http://www.embeddedlinuxconference.com/>





CE Linux Forum

ELC 2010

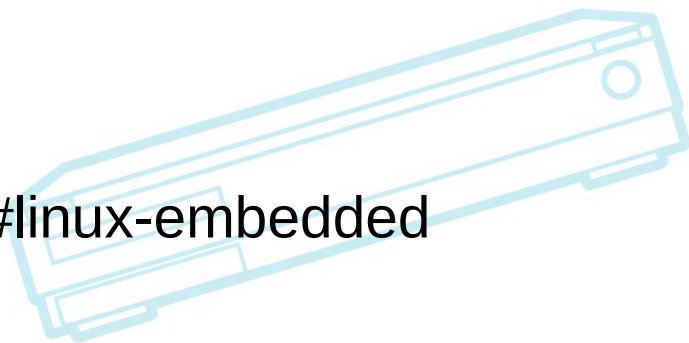
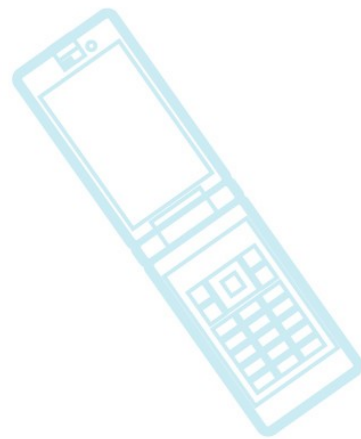
- April 12-14 in San Francisco, CA, USA
- Co-Located with Linux Foundation Collaboration Summit
- Call for presentations will go out shortly
- For notifications, subscribe to elc-announce@tree.celinuxforum.org



CE Linux Forum

Resources

- LWN.net
 - <http://www.lwn.net/>
 - If you are not a subscriber, please do so
 - This is an invaluable community resource that needs your support
- eLinux wiki
 - <http://elinux.org/>
- Linux-embedded mailing list
 - <http://vger.kernel.org/vger-lists.html#linux-embedded>





CE Linux Forum

Thanks!

Keep up the good work!

